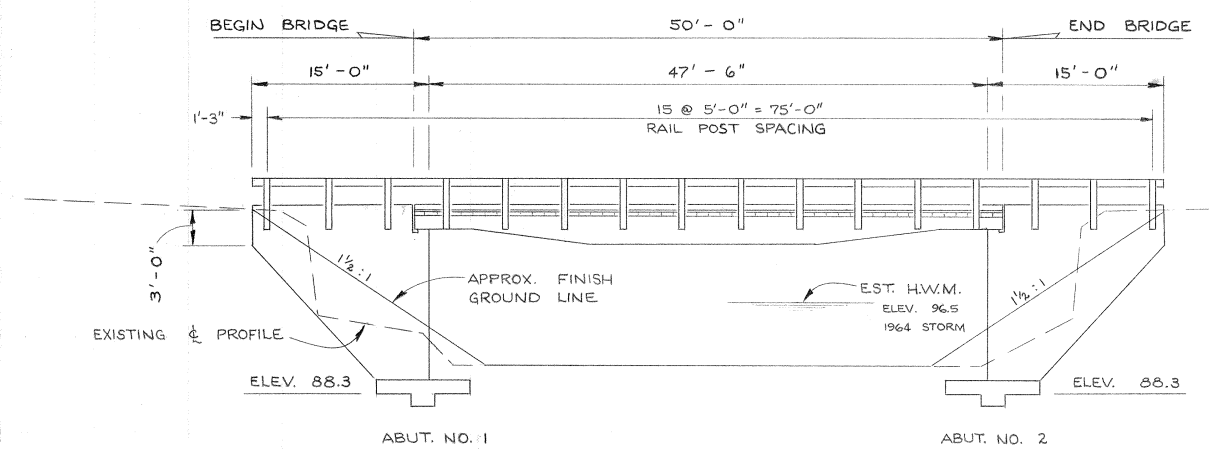
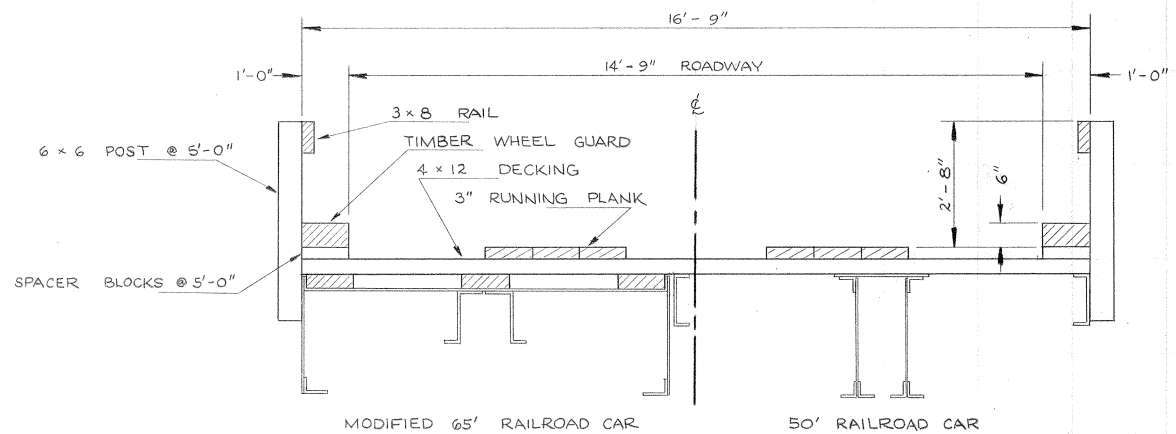


PROFILE GRADE



ELEVATION



TYPICAL SECTION

1/2" = 1'-0"

APPROXIMATE QUANTITIES

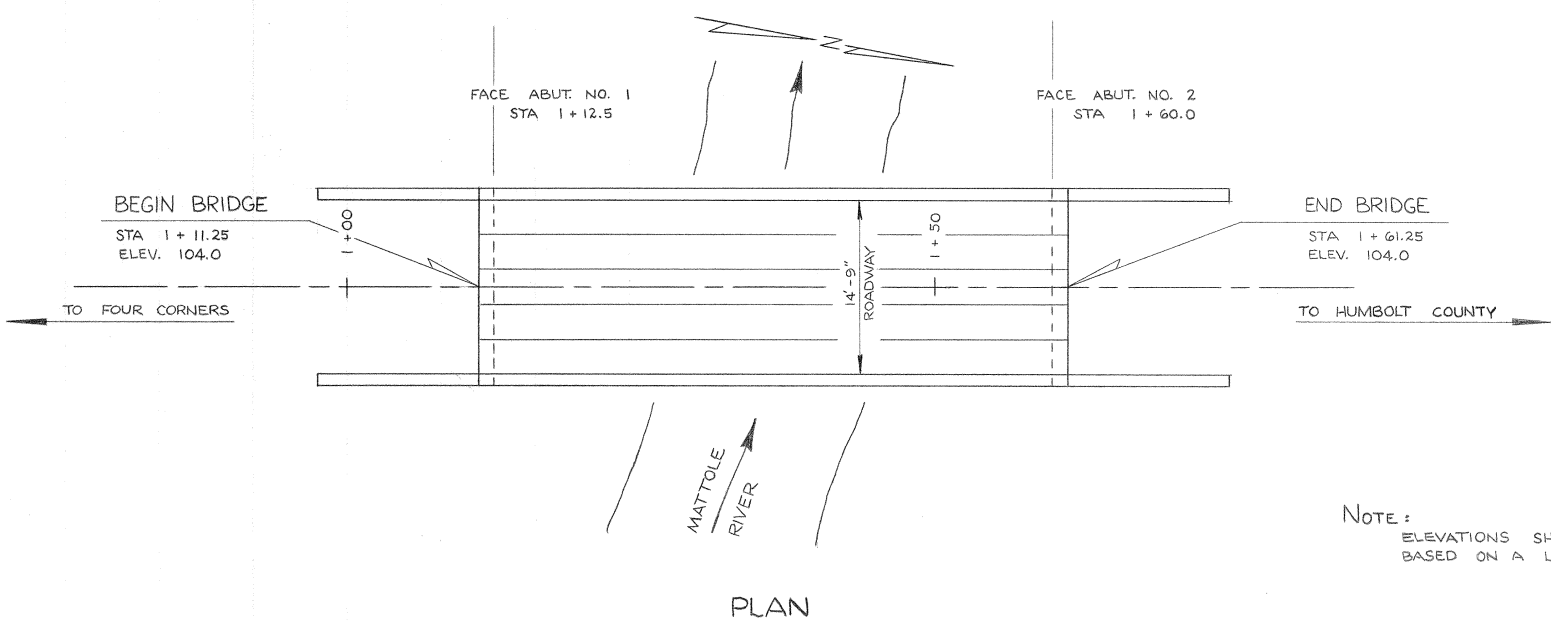
STRUCTURE EXCAVATION (BRIDGE)	100	C.Y.
STRUCTURE BACKFILL (BRIDGE)	145	C.Y.
CLASS A CONCRETE (BRIDGE)	63	C.Y.
REINFORCING STEEL	9000	LBS.
UNTREATED LUMBER	6.2	M. BD. FT.

INDEX TO PLANS

- 1 GENERAL PLAN
- 2 ABUTMENT DETAILS
- 3 DECK & CAR MODIFICATION DETAILS

APPROVED

 CHAIRMAN, BOARD OF SUPERVISORS



PLAN

NOTE: ELEVATIONS SHOWN IN THESE PLANS ARE BASED ON A LOCAL DATUM.

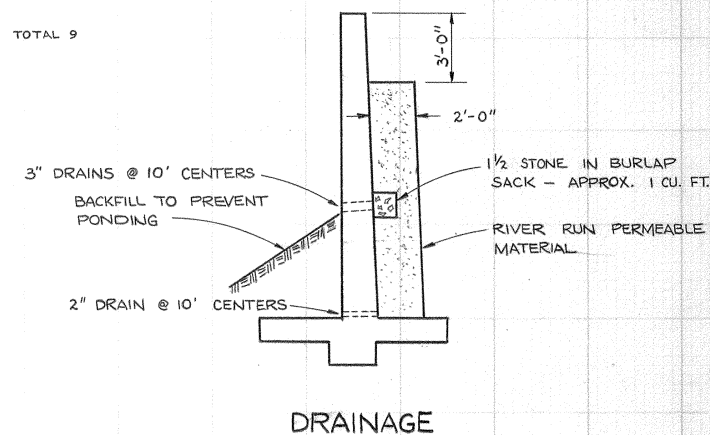
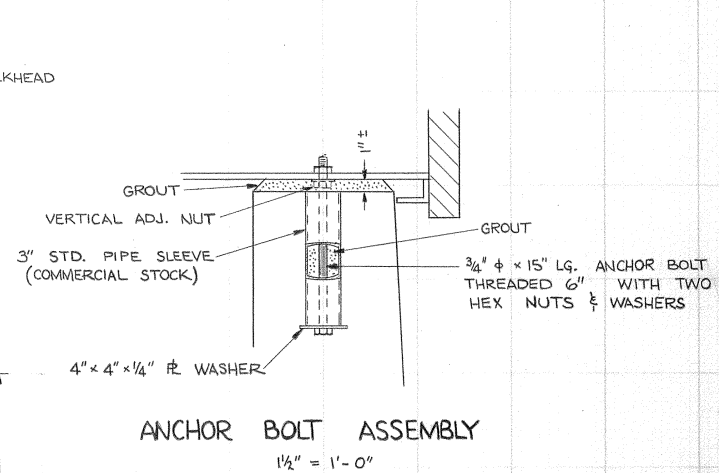
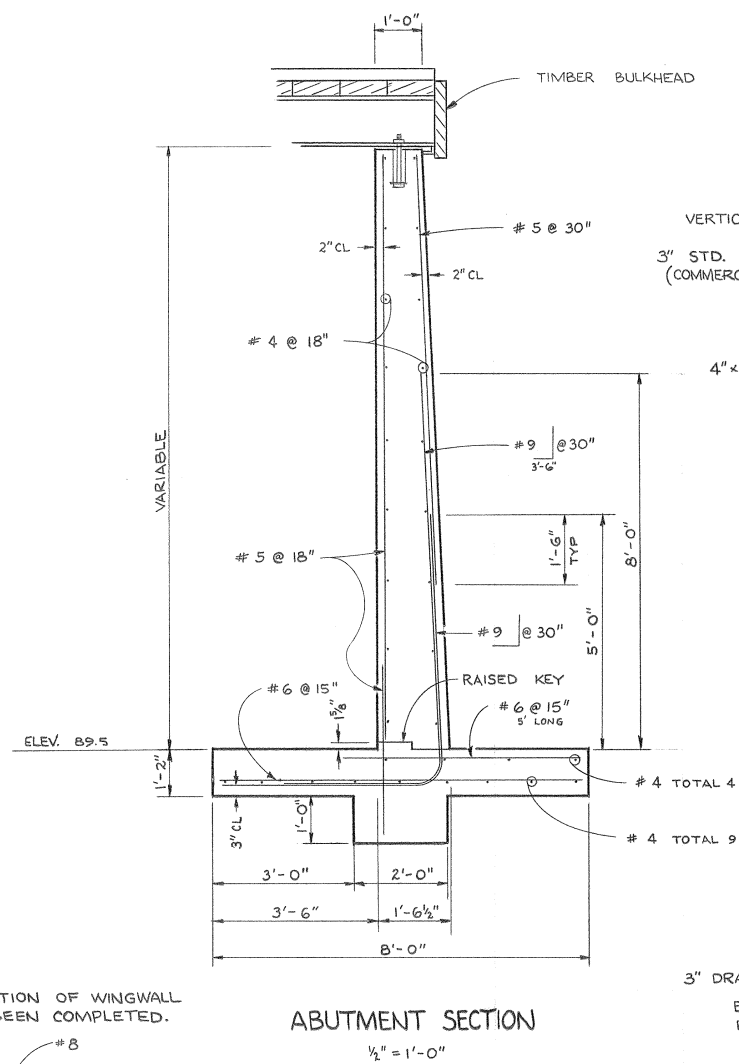
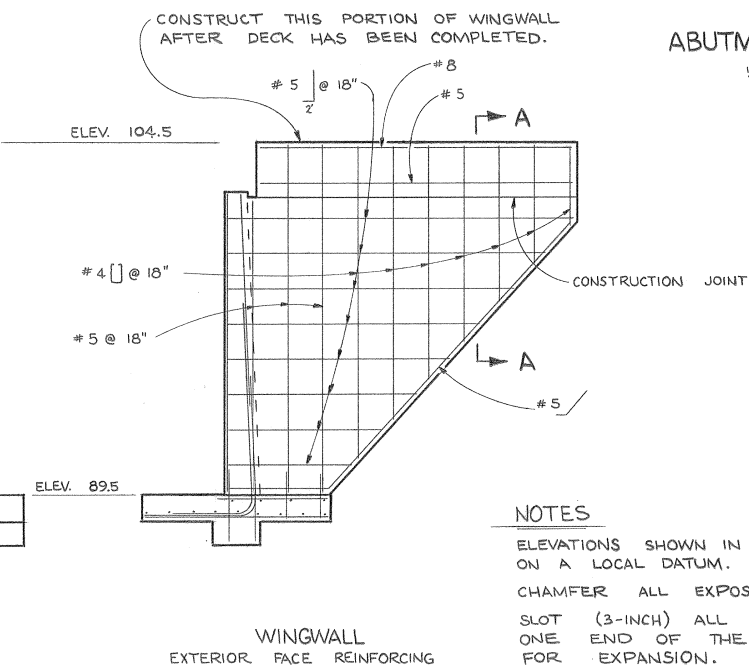
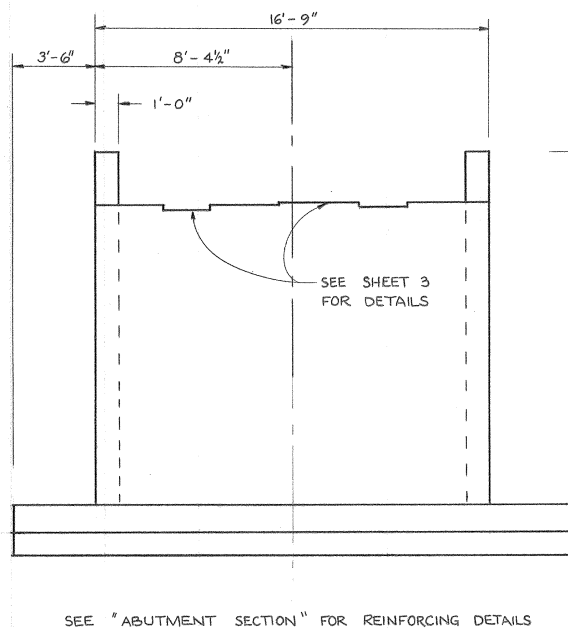
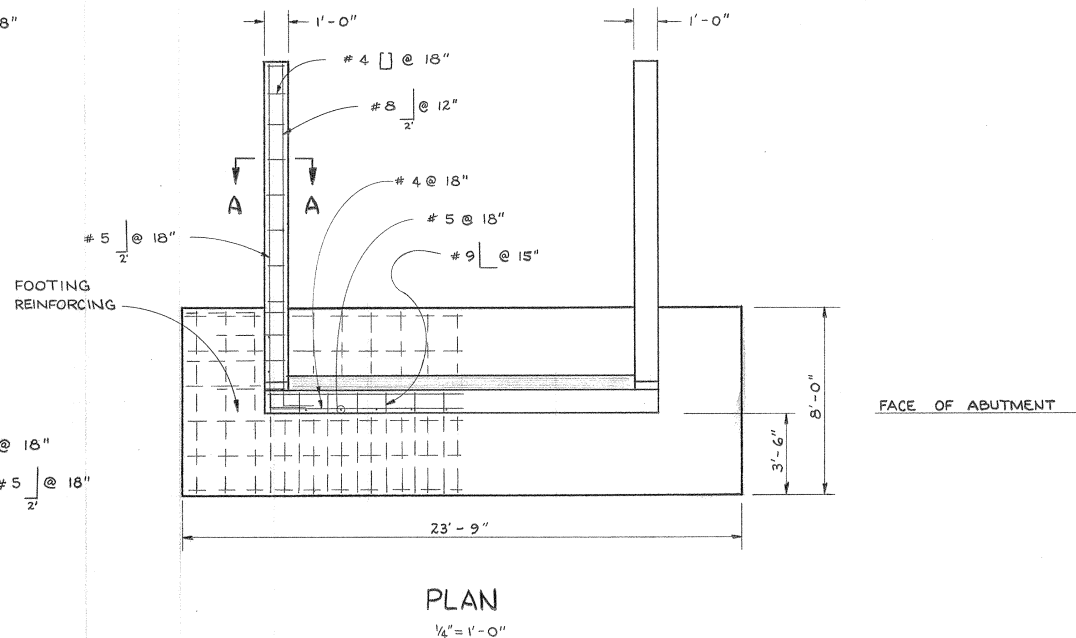
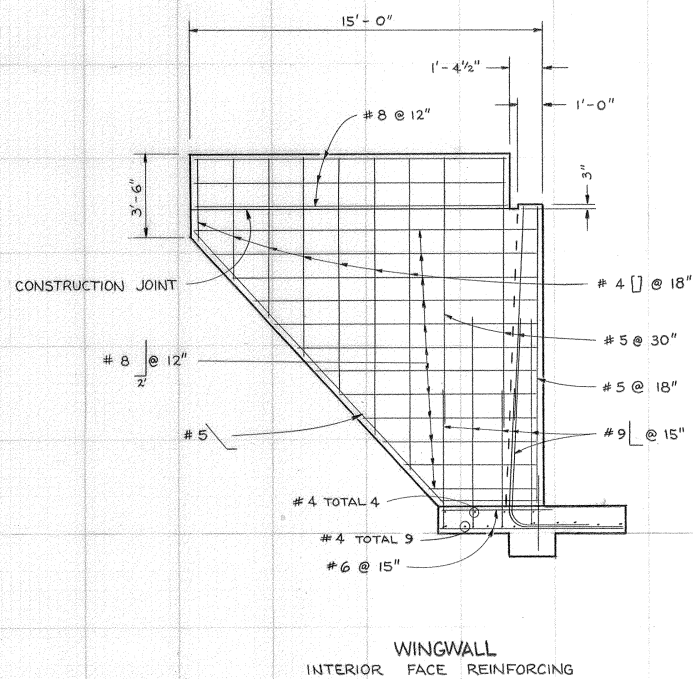
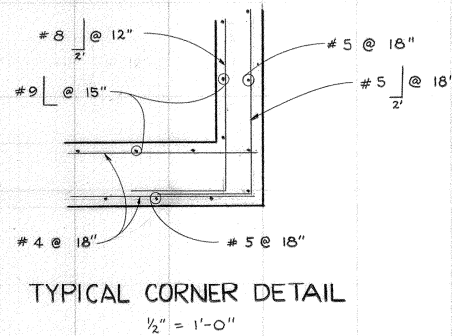
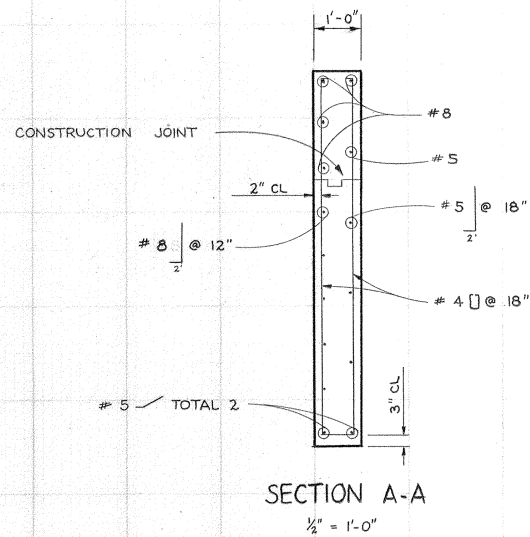
THE PROPOSED LOCATION OF THIS BRIDGE IS AT THE SITE OF THE ORIGINAL STRUCTURE DOWNSTREAM FROM THE EXISTING LOG BRIDGE.

T.B.M. ELEV. 100.00 (LOCAL DATUM)
 SPIKE IN 14" PEPPERWOOD
 34' RT. OF STA. 1+67



APPROVED COUNTY ENGINEER R.C.E. NO. 13895	COUNTY ROAD 435 BRIDGE NO. 4
MENDOCINO COUNTY	
MATTOLE RIVER BRIDGE BRICELAND ROAD	
GENERAL PLAN	
SCALE 1/8" = 1'-0"	JAN. 9, 1967 DESIGNED BY

SHEET 1 OF 3



NOTES

ELEVATIONS SHOWN IN THESE PLANS ARE BASED ON A LOCAL DATUM.

CHAMFER ALL EXPOSED EDGES 3/4"

SLOT (3-INCH) ALL ANCHOR BOLT HOLES AT ONE END OF THE BRIDGE TO PROVIDE FOR EXPANSION.

IF FOUND NECESSARY AT THE TIME OF CONSTRUCTION, THE WINGWALLS MAY BE LENGTHENED TO PROVIDE INCREASED PROTECTION TO THE APPROACH FILLS.

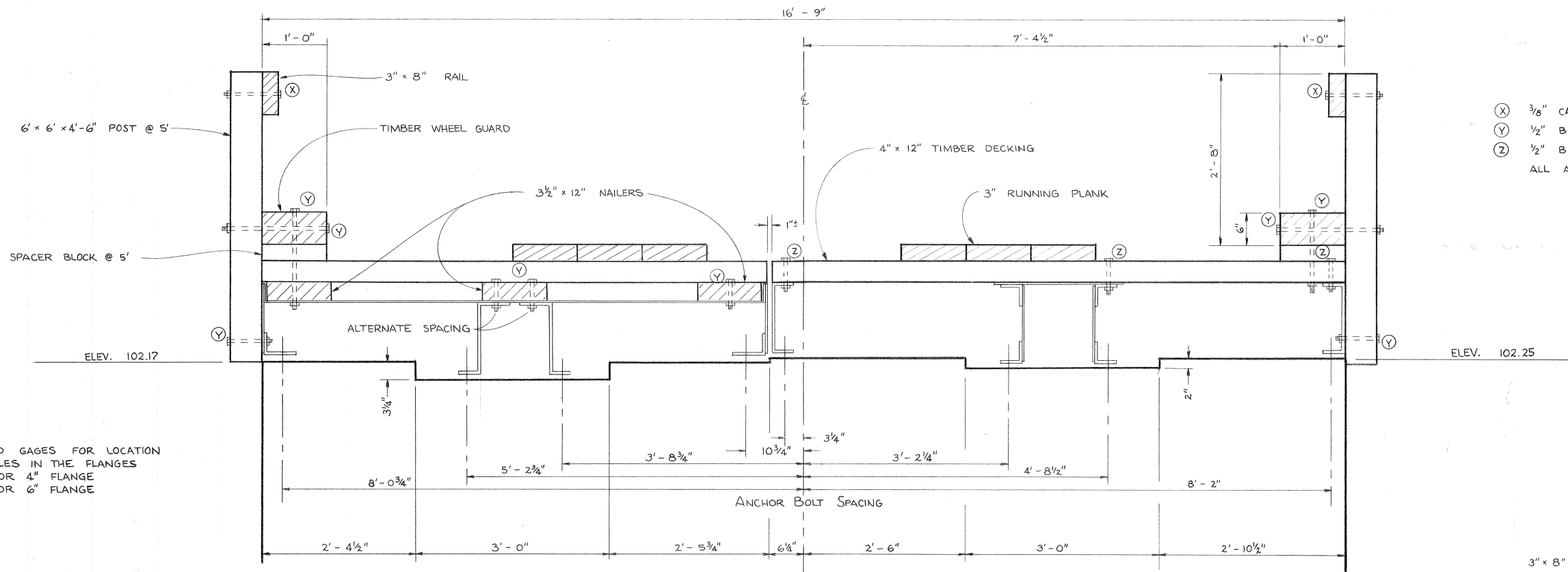


SHEET 2 OF 3

APPROVED	COUNTY ROAD 435 BRIDGE NO. 4
<i>Robert R. Newhouse</i> 1/24/67	
COUNTY ENGINEER R.C.E. NO. 13895	
MENDOCINO COUNTY	
MATTOLE RIVER BRIDGE	
BRICELAND ROAD	
ABUTMENT DETAILS	
SCALE AS SHOWN	DESIGNED BY <i>J. E. Belliston</i>
JAN. 16, 1967	

MODIFIED 65' RAILROAD CAR

50' RAILROAD CAR

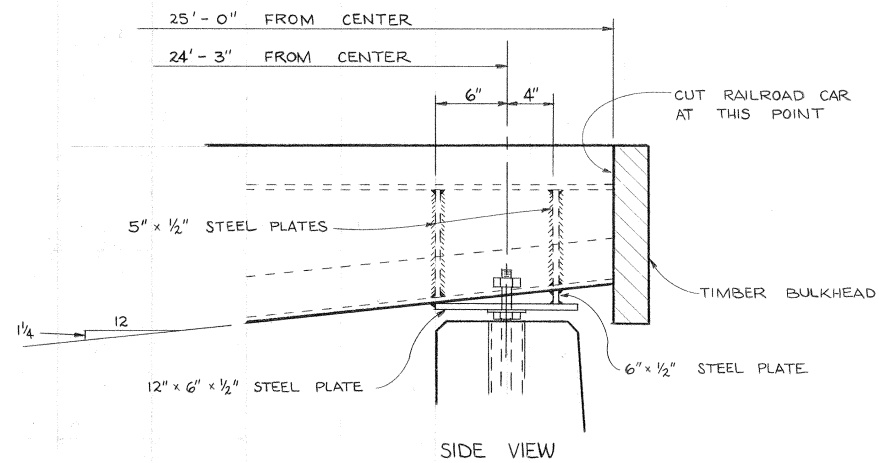


- (X) 3/8" CARRIAGE BOLT @ 5'
- (Y) 1/2" BOLT w/ HEX NUT & WASHERS @ 5'
- (Z) 1/2" BOLT w/ HEX NUT & WASHERS @ 12"
- ALL ANCHOR BOLTS ARE 3/4" x 15"

USE STANDARD GAGES FOR LOCATION OF BOLT HOLES IN THE FLANGES
 2 1/2" FOR 4" FLANGE
 3 1/2" FOR 6" FLANGE

TYPICAL SECTION AT ABUTMENT

1" = 1'-0"



SIDE VIEW

ALL WELDS TO BE 3/16-INCH FILLET WELDS

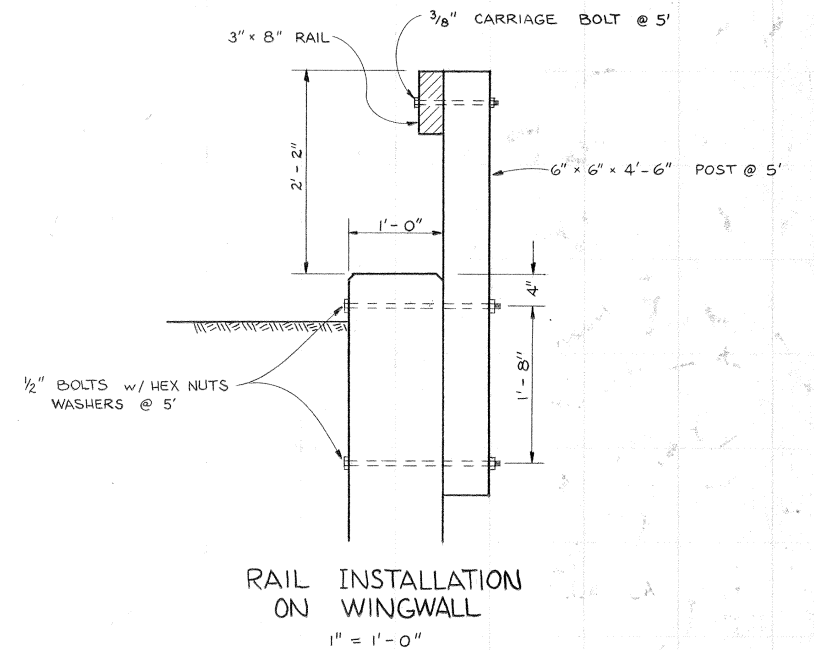
5" x 1/2" STEEL PLATES (CUT TO FIT)

6" x 1/2" STEEL PLATE

12" x 6" x 1/2" STEEL PLATE

END VIEW

BEARING DETAILS
 OUTSIDE FLANGES
 65' RAILROAD CAR
 1 1/2" = 1'-0"



RAIL INSTALLATION ON WINGWALL

1" = 1'-0"

NOTES

LUMBER DIMENSIONS MAY BE VARIED SLIGHTLY TO MAKE USE OF MATERIALS ON HAND.

ELEVATIONS SHOWN IN THESE PLANS ARE BASED ON A LOCAL DATUM.



SHEET 3 OF 3

APPROVED <i>Robert R. Newhouse</i> 1/24/67 COUNTY ENGINEER R.C.E. NO. 13895	COUNTY ROAD 435 BRIDGE NO. 4
MENDOCINO COUNTY	
MATTOLE RIVER BRIDGE BRICELAND ROAD	
DECK & CAR MODIFICATION DETAILS	
SCALE AS SHOWN	JAN. 23, 1967
DESIGNED BY <i>J.E. Bullinton</i>	