

# Little River Restoration and Bridge Replacement Project

## Special Status Plant Survey Report

Van Damme State Park

Mendocino County



**July 2025**

STATE OF CALIFORNIA  
Department of Parks and Recreation  
Northern Service Center



Prepared By:  
Lisa Paterson, Senior Environmental Scientist  
Northern Service Center  
[Lisa.Paterson@parks.ca.gov](mailto:Lisa.Paterson@parks.ca.gov)

## Table of Contents

|                   |   |    |
|-------------------|---|----|
| <b>Chapter 1.</b> | Introduction .....                            | 1  |
| 1.1.              | Background.....                               | 1  |
| 1.2.              | Survey Area .....                             | 1  |
| 1.3.              | Special Status Plant Species Definition ..... | 1  |
| <b>Chapter 2.</b> | Methods .....                                 | 2  |
| 2.1.              | Literature Review .....                       | 2  |
| 2.2.              | Survey Methodology .....                      | 3  |
| <b>Chapter 3.</b> | Results .....                                 | 3  |
| 3.1.              | Literature Review .....                       | 3  |
| 3.2.              | Survey Results.....                           | 8  |
| 3.3.              | Project Impacts .....                         | 9  |
| 3.4.              | Avoidance and Minimization Efforts .....      | 9  |
| <b>Chapter 4.</b> | References.....                               | 10 |

## Appendix A. Photographs

### List of Figures

|           |   |    |
|-----------|---|----|
| Figure 1. | Project location.....   | 12 |
| Figure 2. | Study area with location of fringed false hellebore observed during field surveys. .... | 13 |

### List of Tables

|          |   |    |
|----------|---|----|
| Table 1. | Special status plant species identified during the literature review and assessments of the potential for these species to occur at the study area..... | 15 |
| Table 2: | Plant species observed (April 14, 2025 and May 28, 2025) .....  | 28 |

## **Summary**

This report describes desktop research and field surveys conducted to identify special status plants that may be impacted by the Little River Restoration and Bridge Replacement Project. Field surveys were conducted on April 15 and May 28, 2025. One individual of one special status plant species, fringed false hellebore (*Veratrum fimbriatum*), was observed within the study area during these surveys. The fringed false hellebore was observed on the south bank of Little River near the location of the new bridge (Figure 2). Fringed false hellebore has a California Rare Plant Rank of 4.3. CRPR 4 is a watch list; it includes plants of limited distribution. The threat rank of 0.3 includes plants which are not very threatened in California. No other special status plants were observed within the study area during field surveys.

## **Chapter 1. Introduction**

---

The purpose of this report is to describe pre-construction special status plant surveys conducted for the Little River Restoration and Bridge Replacement Project. A detailed description of the project and the existing environment within the study area is included in the *Little River Restoration and Bridge Replacement Project Biological Resources Assessment* (State Parks 2025).

### **1.1. Background**

The Little River Restoration and Bridge Replacement project site is within Van Damme State Park which is located three miles south of Mendocino on Highway 1 in Mendocino County (Figure 1). The Little River bisects the park, and within the park, the bridge over the river provides access to the campground and the Fern Canyon Scenic Trail. The original bridge, which was built in 1951, consisted of a two-span corrugated metal arch on concrete abutments. Years of scour undermined the bridge foundations, and it ultimately failed in 2018. A single lane, temporary rail car bridge is in place (on top of the failed bridge structure) and carries traffic over the river. The single lane, temporary bridge needs replacement. The underlying arch culverts are sagging, and the concrete abutments extend into the river causing both fish passage impediments as well as downstream erosion.

The objective of the Little River Bridge Replacement Project (Project) is to replace the failed bridge and restore anadromous fish passage during low flows at Little River in Van Damme State Park. New construction will be above the ordinary high water mark of Little River and the old bridge location will be recontoured. Furthermore, the new bridge will be more perpendicularly orientated to the stream compared to the old bridge, which will improve stream flows and reduce scouring. As a result, the Project will result in no net loss of aquatic resources.

### **1.2. Survey Area**

The boundaries of the botanical study area (study area) were established to include all areas where vegetation may be impacted as a result of the Little River Restoration and Bridge Replacement Project. The survey area is approximately 0.4 miles east of State Highway 1, and 0.5 miles northeast of the Van Damme State Marine Conservation Area (Figure 2). The 1.58 acre survey area includes the location of the existing temporary bridge and failed bridge along Little River, the road on either side of the bridge, the location of the road extension to the new bridge, the small bank stabilization area, and potential staging areas (Figure 2).

### **1.3. Special Status Plant Species Definition**

Special Status Plants are defined as species or subspecies that meet one or more of the following criteria:

- Listed or proposed for listing as threatened or endangered under the federal ESA
- Listed or candidates for listing as threatened or endangered under CESA
- Listed as rare or endangered under the California Native Plant Protection Act

- Meeting the definition of endangered, rare, or threatened species under CEQA Guidelines which may include:
  - Plants tracked by the California Native Plant Society (CNPS) and the California Natural Diversity Database (CNDDDB) as California Rare Plant Rank (CRPR) 1 or 2; and
  - Plants that may warrant consideration on the basis of declining trends, recent taxonomic information, or other factors. This includes plants tracked by the CNPS and CNDDDB as CRPR 3 or 4.
- Locally significant plants, that is, plants that are not rare from a statewide perspective but are rare or uncommon in a local context such as within a county or region.

## **Chapter 2. Methods**

---

### **2.1. Literature Review**

A list of special status plant species documented within the vicinity of the study area was generated using the available sources listed below.

- A United States Fish and Wildlife Service (USFWS) Species List was obtained from Information for Planning and Consultation (IPaC) website on February 18, 2025 (USFWS 2025). The IPaC list is included in the Biological Resources Assessment (State Parks 2025).
- A CNDDDB search of the Mendicino 7.5 minute quadrangle (quad), and the five surrounding quads (Fort Bragg, Noyo Hill, Mathison Peak, Albion, and Elk). Only these six quads were searched instead of the standard nine quad search because of the location of the study area at the coast.
- CNPS Rare Plant Inventory occurrences within the Mendicino quad and five surrounding quads (CNPS 2024a, CNDDDB 2024a).
- CNDDDB and Calflora occurrences were reviewed to determine the proximity of reported occurrences of rare plants to the study area (CNDDDB 2024b and Calflora 2024).

All special status plant species that were identified during the literature review are described in Table 1. This description includes an assessment of the likelihood that each species occurs within the study area and a rationale for this determination.

The determinations of the likelihood of an individual special status plant species occurring at or near the study area are based on the professional judgement of the Environmental Scientists who prepared this report. In general, species were considered of high potential to occur in the study area if adequate habitat for the species was present at or adjacent to the study area and there were known occurrences within one mile of the study area; species were considered of moderate potential to occur in the study area if adequate habitat for the species was present in or adjacent to the study area and there are recent known occurrences within one to five miles of the study area; species were considered of low potential if the closest known occurrences were five to 10 miles from the study area or habitat was determined to be marginal for the species based on environmental conditions.

## 2.2. Survey Methodology

Special status plant surveys were conducted following California Department of Fish and Wildlife *Protocols for Surveying and Evaluating Impacts to Special Status Native Plant Populations and Sensitive Natural Communities* (CDFW 2018) and the California Native Plant Society *Botanical Survey Guidelines* (CNPS 2001). Calflora (Calflora 2024), the Jepson eFlora (Jepson 2024), and CNDDDB observations (CNDDDB 2024a) were used to access phenology and observe morphology of target species. Reference populations of the following species were also visited: coastal bluff morning-glory (*Calystegia purpurata* ssp. *saxicola*), harlequin lotus (*Hosackia gracilis*), leafy-stemmed mitrewort (*Mitellastra caulescens*), nodding semaphore grass (*Pleuropogon refractus*), and fringed false hellebore (*Veratrum fimbriatum*).

Field Surveys were conducted by State Parks Senior Environmental Specialist, Lisa Paterson, on April 15 and May 28, 2025. These surveys were conducted when the special status plants described below in Section 3.1 were expected to be in bloom or identifiable based on vegetative characteristics. Surveys included walking meandering transects throughout the entire study area and identifying all plant species observed. A list of plant species observed is included in Table 2.

## Chapter 3. Results

---

### 3.1. Literature Review

All special status plant species identified during the literature review are listed in Table 1. Twelve special status plant species were identified during the literature review that have a moderate or high potential of occurring at or adjacent to the study area. These species are described below. All information included in the following species accounts is from the Jepson eFlora (Jepson Flora Project 2024) and the CNPS Rare Plant Inventory (CNPS 2024a) unless otherwise noted.

#### **Bolander's reed grass (*Calamagrostis bolanderi*)**

**CRPR 4.2**

Bolander's reed grass has a CRPR of 4.2. CRPR 4 is a watch list; it includes plants of limited distribution. The threat rank of 0.2 includes plants which are moderately threatened in California. This species is not listed under CESA, ESA, or the California Native Plant Protection Act.

Bolander's reed grass is a perennial grass (Poaceae) that spreads by rhizomes. It reaches 20 to 60 inches in height. Its flowers grow in open groups (inflorescences) with branches that are spreading to ascending.

Bolander's reed grass is endemic to California and occurs in coastal areas in Humboldt, Mendocino, and Sonoma Counties. This species occurs in a variety of wetland and forest communities including bogs and fens, broadleaved upland forest, closed-cone coniferous forest, coastal scrub, and North Coast coniferous forest at elevations up to 1,495 feet. There are historic (1899) records of this species from the Little River Area, and it is reported on a State Parks plant species list for Mendocino Headlands State Park. There is a total of nine Calflora occurrences within five miles of the study area.

**Coastal bluff morning-glory (*Calystegia purpurata* ssp. *saxicola*)**

**CRPR 1B.2**

Coastal bluff morning-glory has a CRPR of 1B.2. This rank describes plants that are rare, threatened, or endangered in California and elsewhere and moderately threatened in California. This species is not listed under CESA, ESA, or the California Native Plant Protection Act.

Coastal bluff morning-glory is a perennial vine in the morning glory family (Convolvaceae). It is trailing to weakly climbing; vines reach less than one meter in length. As with other species in the genus *Calystegia*, leaf-like bracts are found just below the flowers. In coastal bluff morning-glory, these bracts are more than one millimeter (mm) below the flowers and usually have small lobes. Coastal bluff morning-glory is distinguished from other subspecies of *Calystegia purpurata* by its leaf shape. The leaves of coastal bluff morning-glory are ovate-triangular to reniform; the leaf tip is generally rounded or notched.

Coastal bluff morning-glory is a California endemic that occurs in Contra Costa, Marin, Sonoma, and Mendocino Counties. It occurs in coastal bluff scrub, coastal dunes, coastal scrub, and North Coast coniferous forest at elevations below 345 feet. The nearest CNDDDB occurrence is at Chapman Point on the Mendocino Bay approximately five miles north of the study area.

This species is observed blooming between April and September and occasionally as early as March.

**Pacific golden saxifrage (*Chrysosplenium glechomifolium*)**

**CRPR 4.3**

Pacific golden saxifrage has a CRPR of 4.3. CRPR 4 is a watch list; it includes plants of limited distribution. The threat rank of 0.3 includes plants which are not very threatened in California. This species is not listed under CESA, ESA, or the California Native Plant Protection Act.

Pacific golden saxifrage is a perennial herb in the saxifrage family (Saxifragaceae) that has underground stems (caudices) or rhizomes. It has stems that grow along the ground or are ascending and forms roots from stem nodes. It has opposite leaves that are round or ovate and have rounded teeth. It has small inconspicuous flowers that grow in the axils of leaves.

This species occurs in California, Oregon and Washington. In California it is found in Del Norte, Humboldt and Mendocino Counties. It occurs in North Coast coniferous forest and riparian forest. It can be found on roadsides, seeps and streambanks. There are three Calflora records within five miles of the study area, of which one is 0.15 miles southeast of the study area.

This species most frequently is found in bloom in March through May but can also be found in bloom as early as February and in the fall (September through November).

**Oregon goldthread (*Coptis laciniata*)**

**CRPR 4.2**

Oregon goldthread has a CRPR of 4.2. CRPR 4 is a watch list; it includes plants of limited distribution. The threat rank of 0.2 includes plants which are moderately threatened in California. This species is not listed under CESA, ESA, or the California Native Plant Protection Act.

Oregon goldthread is a perennial herb in the buttercup family (Ranunculaceae) that has rhizomes or underground stems. It is scapose, meaning flowers occur at the end of long leafless stems. It has compound leaves that are composed of leaflets that are often toothed. It has stalked fruits with papery, more or less translucent walls. These fruits form in small clusters (umbels).

This species occurs in California, Oregon, and Washington. In California, it is found in Del Norte, Humboldt, and Mendocino Counties. It occurs in meadows and seeps and on streambanks in North Coast coniferous forest. The CNPS rare plant inventory reports this species in the Mendocino, Mathison Peak, and Elk Quadrangles but details regarding these occurrences are not provided. There is a 2023 Calflora occurrence of this species approximately 5.5 miles north of the study area.

This species is most frequently observed blooming in the spring and summer between March and July but is occasionally found in flower as early as February and in September through November.

**Swamp harebell (*Eastwoodiella californica*)**

**CRPR 1B.2**

Swamp harebell has a CRPR of 1B.2. This rank describes plants that are rare, threatened, or endangered in California and elsewhere and moderately threatened in California. This species is not listed under CESA, ESA, or the California Native Plant Protection Act.

Swamp harebell is a small perennial herb in the Bellflower Family (Campanulaceae). It reaches four to 12 inches in height and does not have hairs. It has leaves that are less than an inch long and ovate with rounded teeth. It has bell-shaped flowers that have pale blue petals.

This species occurs in coastal areas in Santa Cruz, Marin, Sonoma and Mendocino Counties. It occurs in mesic areas within several habitats including bogs and fens, closed-cone coniferous forest, coastal prairie, marshes and swamps (freshwater), meadows and seeps, and North Coast coniferous forest. There are four CNDDDB occurrences within five miles of the study area. The nearest CNDDDB occurrence is approximately 0.6 miles southeast of the study area.

Swamp harebell is found blooming from June to October.

**Harlequin lotus (*Hosackia gracilis*)**

**CRPR 4.2**

Harlequin lotus has a CRPR of 4.2. CRPR 4 is a watch list; it includes plants of limited distribution. The threat rank of 0.2 includes plants which are moderately threatened in California. This species is not listed under CESA, ESA, or the California Native Plant Protection Act.

The harlequin lotus is a perennial herb in the pea family (Fabaceae) that grows by stolons or rhizomes. The plants do not have thorns, and they are not obviously gland dotted. This species has fragile triangular stipules (appendages at the base of the leaf stem), and its leaves are made of three to seven leaflets. It has showy flowers with yellow banner petals, and wing petals that are pink to purple fading to white.

Within the US, this species occurs in California, Oregon and Washington. In California it is found from Del Norte County south to San Luis Obispo County at elevations up to 2,295 feet. It occurs in several habitats including broadleafed upland forest, cismontane woodland, closed-cone coniferous forest, coastal bluff scrub, coastal prairie, coastal scrub, marshes and swamps, meadows and seeps, North Coast coniferous forest, and valley and foothill grassland. It often is found on roadsides or in wetlands. There are many Calflora occurrences of this species along the coast of Mendocino County. This species is included on the 2005 plant list for Van Damme State Park compiled by botanist Teresa Sholars.

It is found blooming in March through July

**Coast lily (*Lilium maritimum*)**

**CRPR 1B.1**

Coast lily has a CRPR of 1B.1. This rank describes plants that are rare, threatened, or endangered in California and elsewhere and seriously threatened in California. This species is not listed under CESA, ESA, or the California Native Plant Protection Act.

Coast lily is in the Lily Family (Liliaceae) and grows from spreading, scaly, elongated bulbs often exceed one meter in height. The showy bell-shaped flowers have red or red-orange petals that are reflexed 20-50%.

This species is found in Marin, Sonoma, and Mendocino Counties at elevations ranging from 15 to 1560 ft. It occurs in broadleaved upland forest, closed-cone coniferous forest, coastal prairie, coastal scrub, marshes and swamps (freshwater), and North Coast coniferous forest. In these habitats it is sometimes found on roadsides. There are six CNDDDB occurrences within five miles of the study area. The nearest CNDDDB occurrences are two locations, one of which is two miles northeast of the study area and the second which is 1.4 miles southeast of the study area.

It is found blooming between April and August but is most frequently observed in bloom in April and May.

**Heart-leaved twayblade (*Listera cordata*)**

**CRPR 4.2**

Heart-leaved twayblade has a CRPR of 4.2. CRPR 4 is a watch list; it includes plants of limited distribution. The threat rank of 0.2 includes plants which are moderately threatened in California. This species is not listed under CESA, ESA, or the California Native Plant Protection Act.

Heart-leaved twayblade is a perennial herb in the Orchid Family (Orchidaceae). It typically has two leaves that are attached to the stems and lobed at the base or heart shaped. It has green petals, its lower petal (lip) is deeply lobed.

It occurs throughout the western US and in the northeast. In California, this species occurs in Del Norte, Humboldt, Trinity, and Mendocino Counties at elevations from 15 to 4,495 feet. It is found in bogs and fens, lower montane coniferous forest, and North Coast coniferous forest. There are two Calflora occurrences within five miles of the study area. This species is included on the 2005 plant list for Van Damme State Park compiled by botanist Teresa Sholars.

It is most often found in bloom in March through June but is occasionally found in bloom in February and July.

**Leafy-stemmed mitrewort (*Mitellastrum caulescens*)**

**CRPR 4.2**

Leafy-stemmed miterwort has a CRPR of 4.2. CRPR 4 is a watch list; it includes plants of limited distribution. The threat rank of 0.2 includes plants which are moderately threatened in California. This species is not listed under CESA, ESA, or the California Native Plant Protection Act.

Leafy-stemmed miterwort is a perennial herb in the Saxifrage Family (Saxifragaceae) that has scaly rhizomes. It has basal leaves and one to few leaves along the stem. It has yellow-green petals that are distinctly lobed forming a feather-like shape.

It occurs in bogs and fens, lower montane coniferous forest, and North Coast coniferous forest at elevations ranging from 15 to 4495 feet. There are two Calflora occurrences within five miles

of the study area. The CNDDDB includes a 1957 record of this species occurring along the banks of Little River which overlaps with the study area. This species is also included on the 2005 plant list for Van Damme State Park compiled by botanist Teresa Sholars.

It is found blooming between February and July and has been most often observed in bloom in May through July.

**California pinefoot (*Pityopus californicus*)**

**CRPR 4.2**

California pinefoot has a CRPR of 4.2. CRPR 4 is a watch list; it includes plants of limited distribution. The threat rank of 0.2 includes plants which are moderately threatened in California. This species is not listed under CESA, ESA, or the California Native Plant Protection Act.

California pinefoot is a perennial herb in the Heath Family (Ericaceae) that lacks chlorophyll and receives nutrition from an external source. The above ground portion of this plant consists of the flower stem with its cream to yellow flowers and leaf-like bracts.

In the United States, this species occurs in California, Oregon, and Washington. In northern California, it is found in Del Norte, Humboldt, Mendocino, Siskiyou, and Trinity Counties, and it is also found in Fresno, Madera, Tulare Counties to the south. It is found in mesic communities within broadleaved upland forest, lower montane coniferous forest, North Coast coniferous forest, and upper montane coniferous forest habitats at elevations ranging from 50 to 7,300 feet. There are five Calflora occurrences of this species within five miles of the study area. Calflora cites historic (1949-1956) herbarium collections of this species near the study area along Little River, in the Mendocino Headlands State Park, and near the Albion River, and a recent occurrence of this species at Jug Handle State Park approximately 14 miles north of the study area.

It is found in bloom in May through August and also occasionally in March and April.

**Nodding semaphore grass (*Pleuropogon refractus*)**

**CRPR 4.2**

Nodding semaphore grass has a CRPR of 4.2. CRPR 4 is a watch list; it includes plants of limited distribution. The threat rank of 0.2 includes plants which are moderately threatened in California. This species is not listed under CESA, ESA, or the California Native Plant Protection Act.

Nodding semaphore is a perennial grass (Poaceae) that grows by rhizomes. It grows to 27 to 60 inches in height. Groups of flowers (spikelets) are attached to the main stem (in a raceme) and are reflexed as they mature. The common name of this plant "semaphore grass" comes from the flag like appears of these spikelets.

It is found in mesic areas in lower montane coniferous forest, meadows and seeps, North Coast coniferous forest, and riparian forest habitats at elevation up to 5,250 feet. In the United States, this species occurs in California, Oregon, and Washington, and in California it occurs in Del Norte, Humboldt, Mendocino, Sonoma, and Marin Counties. Calflora contains several occurrences of this species in Russian Gluch State Park approximately 5 miles north of the Project Area.

It is found in bloom in April through August and also occasionally in February and March.

**Fringed false hellebore (*Veratrum fimbriatum*)**

**CRPR 4.3**

Fringed false hellebore has a CRPR of 4.3. CRPR 4 is a watch list; it includes plants of limited distribution. The threat rank of 0.3 includes plants which are not very threatened in California. This species is not listed under CESA, ESA, or the California Native Plant Protection Act.

Fringed false hellebore is a perennial herb in the false-hellebore Family (Melanthiaceae). It grows to 3 to 6 feet in height and has many leaves that are widely ovate with coarse parallel veins. The petals are white, green, or red-brown and fringed.

Fringed false hellebore occurs in Mendocino and Sonoma Counties in California and is found in mesic microhabitats within bogs and fens, coastal scrub, meadows and seeps, and North Coast coniferous forest. It is found at elevations ranging from 10 to 985 feet. There are seven Calflora records within five miles of study area, of which four are within the park and two are within 0.15 miles of the study area.

It is found in bloom from July to September.

### **3.2. Survey Results**

#### Special Status Plants

One occurrence of one special status plant species, fringed false hellebore (*Veratrum fimbriatum*), was observed during field surveys. One fringed false hellebore was found on the south bank of Little River near the location of the new bridge (Figure 2). A list of all plant species observed during field surveys is included in Table 2.

#### Natural Communities

Natural Communities of special concern that occur within the region and at the project site are described in the Biological Resources Assessment for this project (State Parks 2025). A general description of the natural communities observed during field surveys is included below.

The project site is within Fern Canyon. The lowest portion of the study area is the gravel streambed. The streambed is largely unvegetated, but some herbaceous emergent vegetation was observed on gravel bars and at the edges of the channel. Dominant species in the streambed community included the following native and non-native herbaceous perennials creeping buttercup (*Ranunculus repens*), tall manna grass (*Glyceria elata*), and western coltsfoot (*Petasites frigidus* var. *palmatus*).

The streambanks are steep and incised. Riparian vegetation occurs on and adjacent to the banks of Little River. The riparian community has a sparse overstory of red alder (*Alnus rubra*) and a mid-level overstory of red elderberry (*Sambucus racemosa* var. *racemosa*). There is a very dense understory of small shrubs and herbaceous perennials in the riparian community. Dominant understory species include western sword fern (*Polystichum munitum*), California blackberry (*Rubus ursinus*), broadleaf forget-me-not (*Myosotis latifolia*), and western lady fern (*Athyrium filix-femina* var. *cyclosorum*).

There is a narrow level floodplain above the streambanks. In this area, riparian vegetation is adjacent to developed roads and campsites in some locations. The campsites and roadsides are regularly mowed and support a combination of native and non-native herbaceous species.

Outside of these developed areas the riparian vegetation transitions to coniferous forest. Beyond the narrow floodplain steep hillsides occur on both sides of Little River forming Fern Canyon.

Overstory species in the adjacent coniferous forest include grand fir (*Abies grandis*), Douglas fir (*Pseudotsuga menziesii* var. *menziesii*), and red alder. There is a mid-level overstory layer dominated by red elderberry and tanoak (*Notholithocarpus densiflorus*) and a very dense understory dominated by western sword fern and thimbleberry (*Rubus parviflorus*).

Photographs of the study area are included in Appendix A.

### 3.3. Project Impacts

The project is expected to result in impacts on one individual of, fringed false hellebore (*Veratrum fimbriatum*). This species is not listed under the federal or California Endangered Species Acts and has a CRPR of 4.3. CRPR 4 is a watch list; it includes plants of limited distribution. The threat rank of 0.3 includes plants which are not very threatened in California. Although this species is included on the California Native Plant Society watch list, it is not considered rare or endangered. This plant will be collected prior to construction and transplanted. Impacts to this individual plant are not expected to result in impacts on the population of fringed false hellebore within Van Damme State Park because this species was also observed in several locations along Little River outside of the project footprint.

### 3.4. Avoidance and Minimization Efforts

Due to year-to-year variations in the occurrence of rare plants, the area will be surveyed for the occurrence of rare plants within 30 days prior to construction.

The following special status plant avoidance and minimization measures will be implemented for this project:

**Special-Status Plant Impact Avoidance and Minimization:** Where possible, special-status plant occurrences will be avoided and protected from construction activities. Locations where special status plants can't be avoided will be subject to the following conditions as approved by a State Parks Environmental Scientist:

#### Perennial Species

- Prior to construction, plants will be carefully excavated and transplanted to nearby suitable habitat. All transplant work will be conducted under the direction of District Resource Staff, a State Parks Environmental Scientist, or a State Parks-approved biologist.
- If possible, transplanting should occur during the dormant growing season (i.e. late fall) when the plants are least disturbed and can receive winter precipitation.

## **Chapter 4.                   References**

---

- Calflora. 2024. Calflora: Information on California plants for education, research and conservation. Accessed December 31, 2024. <https://www.calflora.org/>
- California Department of Fish and Wildlife (CDFW). 2018b. Protocols for Surveying and Evaluating Impacts to Special Status Native Plant Populations and Sensitive Natural Communities. Sacramento, CA: California Natural Resources Agency, CDFW. <https://nrm.dfg.ca.gov/FileHandler.ashx?DocumentID=18959&>
- California Department of Parks and Recreation (State Parks). 2025. Little River Restoration and Bridge Replacement Project, Biological Resources Assessment. February 2025. California State Parks, Northern Service Center, Sacramento, CA.
- California Natural Diversity Database (CNDDDB). 2024a. RareFind 5 [version 5.3.0]. California Department of Fish and Wildlife. Accessed November 8 and December 30, 2024. <https://wildlife.ca.gov/Data/CNDDDB/Maps-and-Data#43018407-rarefind-5>.
- California Natural Diversity Database (CNDDDB). 2024b. California Natural Diversity Database, GIS Data Updates. Accessed November 8, 2024. California Department of Fish and Wildlife. <https://wildlife.ca.gov/Data/CNDDDB/Maps-and-Data#43018409-monthly-data-updates>.
- California Native Plant Society (CNPS). 2001. CNPS Botanical Survey Guidelines. California Native Plant Society, Sacramento, CA. Accessed July 11, 2025. [https://cnps.org/wp-content/uploads/2018/03/cnps\\_survey\\_guidelines.pdf](https://cnps.org/wp-content/uploads/2018/03/cnps_survey_guidelines.pdf).
- California Native Plant Society (CNPS). 2024a. Rare Plant Inventory (online edition, v9.5). Accessed December 26, 2024. <https://www.rareplants.cnps.org>.
- Jepson Flora Project (eds.). 2025. Jepson eFlora. Accessed December 26, 2024 – January 3, 2025. <https://ucjeps.berkeley.edu/eflora/>.
- U.S. Fish and Wildlife Service. 2025. Information for Planning and Consultation (IPAC). Accessed April 7, 2025. <https://ipac.ecosphere.fws.gov/>.

# **Figures**

Figure 1. Project location.

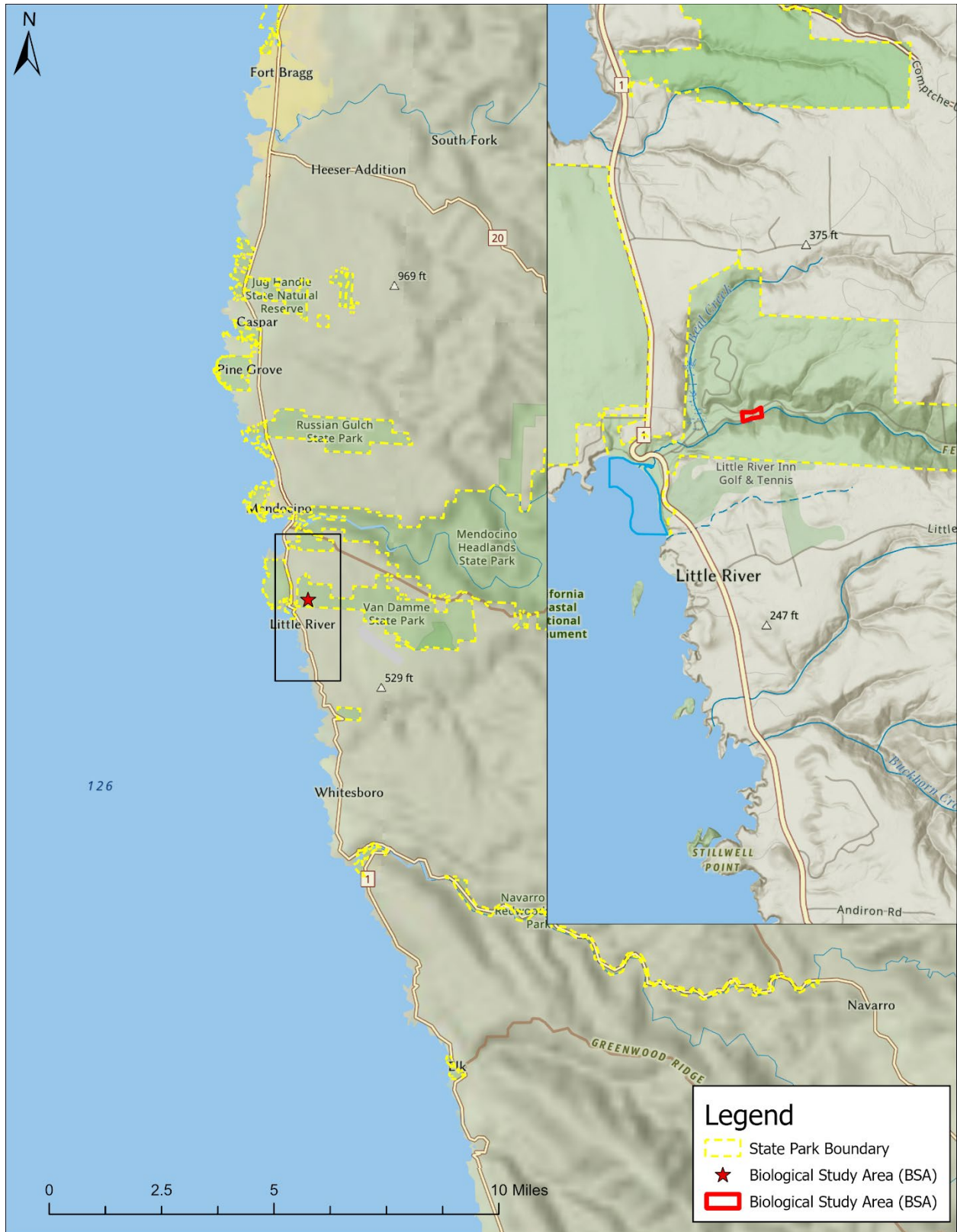


Figure 2. Study area with location of fringed false hellebore observed during field surveys.



# **Tables**

**Table 1. Special status plant species identified during the literature review and assessments of the potential for these species to occur in the study area.**

| Common Name<br>( <i>Scientific Name</i> )   | Status:<br>State/Fed/CNPS | Habitat   | Potential to Occur  |
|---|---------------------------|---|---|
| Pink sand-verbena<br>( <i>Abronia umbellata</i> var.<br><i>breviflora</i> )           | None/None/1B.1            | Coastal dunes; blooms Jun-Oct; at elevations ranging from 0 to 35 ft  | None. Suitable habitat does not occur in Project Area. 1 CNDDDB occurrence within 5 miles of Project Area.  |
| Blasdale's bent grass<br>( <i>Agrostis blasdalei</i> )                                | None/None/1B.2            | Coastal bluff scrub, Coastal dunes, Coastal prairie; blooms May-Jul; at elevations ranging from 0 to 490 ft   | Low. Grassland habitat in Project Area is managed and contains low quality habitat. 2 CNDDDB occurrences within 5 miles of Project.   |
| Sea-watch ( <i>Angelica lucida</i> )  | None/None/4.2             | Coastal bluff scrub, Coastal dunes, Coastal scrub, Marshes and swamps (coastal salt); blooms Apr-Sep; at elevations ranging from 0 to 490 ft                            | None. Suitable habitat does not occur in Project Area. 3 Calflora records within 5 miles of Project Area.   |
| Pygmy manzanita<br>( <i>Arctostaphylos nummularia</i> ssp.<br><i>mendocinoensis</i> ) | None/None/1B.2            | Closed-cone coniferous forest (acidic sandy clay); blooms Jan; at elevations ranging from 295 to 655 ft   | None. Suitable habitat does not occur in Project Area. 3 CNDDDB occurrences within 5 miles of Project Area.   |
| Humboldt County milk-vetch ( <i>Astragalus agnicidus</i> )                            | None/SE/1B.1              | Broadleafed upland forest, North Coast coniferous forest, Disturbed areas, Openings, Roadsides (sometimes); blooms (Mar)Apr-Sep; at elevation ranging from 395-2625 ft. | None. The Project area occurs at lower elevations than the known elevation range of this species. The nearest CNDDDB occurrence is over 13 miles northeast of the Project Area. |
| Point Reyes blennosperma<br>( <i>Blennosperma nanum</i> var.<br><i>robustum</i> )     | None/CR/1B.2              | Coastal prairie, Coastal scrub; On open coastal hills in sandy soil; blooms Feb-Apr; at elevation ranging from 35 to 475 ft.  | Low. Grassland habitat in Project Area is managed and contains low quality habitat. The nearest CNDDDB occurrence is over 19 miles north of the Project Area.                   |

| Common Name<br>(Scientific Name)  | Status:<br>State/Fed/CNPS | Habitat  | Potential to Occur   |
|---|---------------------------|--|--|
| Bolander's reed grass<br>( <i>Calamagrostis bolanderi</i> )                         | None/None/4.2             | Bogs and fens, Broadleafed upland forest, Closed-cone coniferous forest, Coastal scrub, Marshes and swamps (freshwater), Meadows and seeps (mesic), North Coast coniferous forest; Mesic microhabitats; blooms May-Aug; at elevations ranging from 0 to 1495 ft  | High. Suitable habitat occurs in Project Area. 9 Calflora records within 5 miles of Project Area. Historic occurrence approximately 0.16 miles east of Project Area.                 |
| Thurber's reed grass<br>( <i>Calamagrostis crassiglumis</i> )                       | None/None/2B.1            | Coastal scrub (mesic), Marshes and swamps (freshwater); blooms May-Aug; at elevations ranging from 35 to 195 ft  | None. Suitable habitat does not occur in Project Area. 1 CNDDDB occurrence within 5 miles of Project Area.   |
| Coastal bluff morning-glory<br>( <i>Calystegia purpurata</i> ssp. <i>saxicola</i> ) | None/None/1B.2            | Coastal bluff scrub, Coastal dunes, Coastal scrub, North Coast coniferous forest; blooms (Mar)Apr-Sep; at elevations ranging from 0 to 345 ft  | Moderate. Suitable habitat occurs in Project Area. 1 CNDDDB occurrence within 5 miles of Project Area.   |
| California sedge ( <i>Carex californica</i> )                                       | None/None/2B.2            | Bogs and fens, Closed-cone coniferous forest, Coastal prairie, Marshes and swamps (margins), Meadows and seeps; blooms May-Aug; at elevations ranging from 295 to 1100 ft  | None. Species occurs at elevation that exceeds Project Area. 10 CNDDDB occurrences within 5 miles of Project Area.   |
| Lagoon sedge ( <i>Carex lenticularis</i> var. <i>limnophila</i> )                   | None/None/2B.2            | Coastal bluff scrub, Coastal prairie, Coastal scrub, Marshes and swamps, Valley and foothill grassland, Vernal pools (margins); Bogs and fens, marshes and swamps, North Coast coniferous forest; Reported from lakeshores and beaches, often in gravelly substrates; blooms Jun-Aug; at elevations from 0 to 20 ft. | None. Species is known from elevations lower than the Project Area. The nearest CNDDDB record of this species is a 1938 occurrence from over 15 miles northeast of the Project Area. |
| Livid sedge ( <i>Carex livida</i> )   | None/None/2A              | Bogs and fens; blooms Jun; occurs at 0 ft  | None. Suitable habitat does not occur in Project Area. 1 CNDDDB occurrence within 5 miles of Project Area.   |

| Common Name<br>(Scientific Name)   | Status:<br>State/Fed/CNPS | Habitat   | Potential to Occur  |
|--|---------------------------|---|---|
| Lyngbye's sedge ( <i>Carex lyngbyei</i> )  | None/None/2B.2            | Marshes and swamps (brackish, freshwater); blooms Apr-Aug; at elevations ranging from 0 to 35 ft  | None. Suitable habitat does not occur in Project Area. 2 CNDDB occurrences within 5 miles of Project Area.  |
| Deceiving sedge ( <i>Carex saliniformis</i> )                                      | None/None/1B.2            | Coastal prairie, Coastal scrub, Marshes and swamps (coastal salt), Meadows and seeps; Mesic microhabitats; blooms (May)Jun(Jul); at elevations ranging from 10 to 755 ft        | Low. Grassland habitat in Project Area is managed and contains low quality habitat. 1 CNDDB occurrence within 5 miles of Project Area.  |
| Johnny-nip ( <i>Castilleja ambigua</i> var. <i>ambigua</i> )                       | None/None/4.2             | Coastal bluff scrub, Coastal prairie, Coastal scrub, Marshes and swamps, Valley and foothill grassland, Vernal pools (margins); blooms Mar-Aug; at elevations from 0 to 1425 ft | Low. Grassland habitat in Project Area is managed and contains low quality habitat. Occurs on the species checklist for Van Damme State Park created by botanist Teresa Sholars |
| Humboldt Bay owl's-clover ( <i>Castilleja ambigua</i> var. <i>humboldtiensis</i> ) | None/None/1B.2            | Marshes and swamps (coastal salt); blooms Apr-Aug; at elevations ranging from 0 to 10 ft  | None. Project Area does not contain suitable habitat. 2 CNDDB occurrences within 5 miles of Project Area.   |
| Oregon coast paintbrush ( <i>Castilleja litoralis</i> )                            | None/None/2B.2            | Coastal bluff scrub, Coastal dunes, Coastal scrub; Sandy microhabitats; blooms Jun; at elevations ranging from 50 to 330 ft   | None; Project Area does not contain suitable habitat. 3 Calflora records within 5 miles of Project Area.  |
| Mendocino Coast paintbrush ( <i>Castilleja mendocinensis</i> )                     | None/None/1B.2            | Closed-cone coniferous forest, Coastal bluff scrub, Coastal dunes, Coastal prairie, Coastal scrub; blooms Apr-Aug; at elevations ranging from 0 to 525 ft                       | Low. Grassland habitat in Project Area is managed and contains low quality habitat. 8 CNDDB occurrences within 5 miles of Project Area.   |
| Glory brush ( <i>Ceanothus gloriosus</i> var. <i>exaltatus</i> )                   | None/None/4.3             | Chaparral; blooms Mar-Jun(Aug); at elevations ranging from 100 to 2000 ft   | None. Project Area does not contain suitable habitat.   |

| Common Name<br>(Scientific Name)   | Status:<br>State/Fed/CNPS | Habitat   | Potential to Occur   |
|--|---------------------------|---|--|
| Point Reyes ceanothus<br>( <i>Ceanothus gloriosus</i><br>var. <i>gloriosus</i> )   | None/None/4.3             | Closed-cone coniferous forest, Coastal bluff scrub,<br>Coastal dunes, Coastal scrub; Sandy microhabitats;<br>blooms Mar-May; at elevations ranging from 15 to 1705 ft                         | None. Project Area does not<br>contain suitable habitat. 7 Calflora<br>occurrences within 5 miles of<br>Project Area.  |
| Howell's spineflower<br>( <i>Chorizanthe howellii</i> )                            | FE/ST/1B.2                | Coastal dunes; blooms May-Jul; at elevations ranging<br>from 0 to 150 ft  | None. Species is restricted to the<br>Ten Mile Dunes. There are no<br>CNDDDB occurrences within 5 miles<br>of Project Area.  |
| Pacific golden saxifrage<br>( <i>Chrysosplenium</i><br><i>glechomifolium</i> )     | None/None/4.3             | North Coast coniferous forest, riparian forest;<br>microhabitats of Roadsides (sometimes), Seeps<br>(sometimes), and Streambanks; blooms Feb-Jun; at<br>elevations ranging from 35 to 1770 ft | High. Project Area contains suitable<br>habitat. 3 Calflora records within 5<br>miles of Project Area, of which one<br>is 0.15 miles southeast of Project.   |
| Whitney's farewell-to-<br>spring ( <i>Clarkia amoena</i><br>ssp. <i>whitneyi</i> ) | None/None/1B.1            | Coastal bluff scrub, Coastal scrub; blooms Jun-Aug; at<br>elevations ranging from 35 to 330 ft  | None. Project Area does not<br>contain suitable habitat. The<br>nearest CNDDDB occurrence is a<br>1914 occurrence over 13 miles N of<br>the Project Area that is reported as<br>extirpated.                    |
| Round-headed collinsia<br>( <i>Collinsia corymbosa</i> )                           | None/None/1B.2            | Coastal dunes; blooms Apr-Jun; at elevations ranging<br>from 0 to 65 ft   | None. Project Area does not<br>contain suitable habitat. The<br>species occurs at elevations lower<br>than the Project Area. The nearest<br>CNDDDB occurrences are over 15<br>miles north of the Project Area. |
| Oregon goldthread<br>( <i>Coptis laciniata</i> )                                   | None/None/4.2             | Meadows and seeps, North Coast coniferous forest<br>(streambanks); Mesic microhabitats; blooms (Feb)Mar-<br>May(Sep-Nov); at elevations ranging from 0 to 3280 ft                             | High. Project Area contains suitable<br>habitat. 4 Calflora records within 5<br>miles of Project Area.   |
| Bunchberry ( <i>Cornus</i><br><i>unalaschkensis</i> )                              | None/None/2B.2            | Bogs and fens, Meadows and seeps, North Coast<br>coniferous forest; blooms May-Jul; at elevations ranging<br>from 195 to 6300 ft  | None. Species occurs at elevation<br>that exceeds Project Area. 4<br>Calflora records within 5 miles of<br>Project Area.   |

| Common Name<br>(Scientific Name)   | Status:<br>State/Fed/CNPS | Habitat  | Potential to Occur  |
|--|---------------------------|--|---|
| Mendocino dodder<br>( <i>Cuscuta pacifica</i> var.<br><i>papillata</i> ) | None/None/1B.2            | Coastal dunes (interdune depressions); blooms (Jun)Jul-Oct; at elevations ranging from 0 to 165 ft   | None. Project Area does not contain suitable habitat. No CNDDDB records within 5 miles of Project Area.   |
| California pitcherplant<br>( <i>Darlingtonia californica</i> )           | None/None/4.2             | Bogs and fens, Meadows and seeps; Mesic, Serpentine (usually) microhabitats; blooms Apr-Aug; at elevations ranging from 0 to 8480 ft   | None. Project Area does not contain suitable habitat; 2 Calflora records within 5 miles of Project Area.  |
| Swamp harebell<br>( <i>Eastwoodiella californica</i> )                   | None/None/1B.2            | Bogs and fens, Closed-cone coniferous forest, Coastal prairie, Marshes and swamps (freshwater), Meadows and seeps, North Coast coniferous forest; Mesic microhabitats; blooms Jun-Oct; at elevations ranging from 5 to 1330 ft | High. Project Area contains suitable habitat. 4 CNDDDB records within 5 miles of Project Area.  |
| Supple daisy ( <i>Erigeron supplex</i> )                                 | None/None/1B.2            | Coastal bluff scrub, Coastal prairie; blooms May-Jul; at elevations ranging from 35 to 165 ft  | None. Project Area does not contain suitable habitat. 3 CNDDDB records within 5 miles of Project.   |
| Bluff wallflower<br>( <i>Erysimum concinnum</i> )                        | None/None/1B.2            | Coastal bluff scrub, Coastal dunes, Coastal prairie; blooms Feb-Jul; at elevations ranging from 0 to 605 ft  | Low. Grassland habitat in Project Area is managed and contains low quality habitat. 4 CNDDDB records within 5 miles of Project Area.  |
| Menzies' wallflower<br>( <i>Erysimum menziesii</i> )                     | FE/SE /1B.1               | Coastal Dunes; Localized on dunes and coastal strand.; blooms Mar-Sep; at elevations ranging from 0 to 115 ft  | None. Project Area does not contain suitable habitat. The species occurs at elevations lower than the Project Area. The nearest CNDDDB occurrences are over 15 miles north of the Project Area. |
| Pacific gilia ( <i>Gilia capitata</i> ssp. <i>pacifica</i> )             | None/None/1B.2            | Chaparral (openings), Coastal bluff scrub, Coastal prairie, Valley and foothill grassland; blooms Apr-Aug; at elevations ranging from 15 to 5465 ft  | Low. Grassland habitat in Project Area is managed and contains low quality habitat. 1 CNDDDB record within 5 miles of Project Area.   |

| Common Name<br>(Scientific Name)   | Status:<br>State/Fed/CNPS | Habitat  | Potential to Occur  |
|--|---------------------------|--|---|
| Woolly-headed gilia<br>( <i>Gilia capitata</i> ssp.<br><i>tomentosa</i> )                | None/None/1B.1            | Coastal bluff scrub, Valley and foothill grassland; Rocky, serpentine outcrops microhabitats; blooms May-Jul; at elevations ranging from 35 to 720 ft                                | Low. Grassland offers low quality habitat, but does not contain serpentine. 0 CNDDDB records within 5 miles of Project Area.  |
| Dark-eyed gilia ( <i>Gilia millefoliata</i> )  | None/None/1B.2            | Coastal dunes; blooms Apr-Jul; at elevations ranging from 5 to 100 ft  | None. Project Area does not contain suitable habitat. 1 CNDDDB record within 1 mile of Project Area.  |
| American glehnia<br>( <i>Glehnia littoralis</i> ssp.<br><i>leiocarpa</i> )               | None/None/4.2             | Coastal dunes; blooms May-Aug; at elevations ranging from 0 to 65 feet   | None. Project Area does not contain suitable habitat. The species occurs at elevations lower than the Project Area. The nearest Calflora occurrences are approximately 16 miles north of the Project Area.  |
| Congested-headed hayfield tarplant<br>( <i>Hemizonia congesta</i> ssp. <i>congesta</i> ) | None/None/1B.2            | Valley and foothill grassland; Grassy valleys and hills, often in fallow fields, sometimes along roadsides; blooms Apr-Nov; at elevations ranging from 65 to 1835 ft                 | Low. Grassland habitat in Project Area is managed and contains low quality habitat. The CNDDDB and Calflora include is a 1938 occurrence of this species approximately 15 miles northeast of the Project Area.  |
| Tracy's tarplant<br>( <i>Hemizonia congesta</i> subsp. <i>tracyi</i> )                   | None/None/4.3             | Coastal prairie, Lower montane coniferous forest, North Coast coniferous forest; Openings, Serpentine (sometimes); blooms (Mar-Apr)May-Oct; at elevation ranging from 395 to 3935 ft | Low because of the distance to verified occurrences. The CNPS rare plant inventory reports this species within the Noyo Hill quad, but details on this observation are not provided. Calflora includes occurrences over 30 miles northeast of the Project Area. |

| Common Name<br>(Scientific Name)   | Status:<br>State/Fed/CNPS | Habitat   | Potential to Occur   |
|--|---------------------------|---|--|
| Short-leaved evax<br>( <i>Hesperovax sparsiflora</i><br>var. <i>brevifolia</i> ) | None/None/1B.2            | Coastal bluff scrub (sandy), Coastal dunes, Coastal prairie; blooms Mar-Jun; at elevations ranging from 0 to 705 ft   | Low. Grassland habitat in Project Area is managed and contains low quality habitat. 3 CNDDDB records within 5 miles of Project Area.   |
| Pygmy cypress<br>( <i>Hesperocyparis pygmaea</i> )                               | None/None/1B.2            | Closed-cone coniferous forest (usually podzol-like soil); at elevations ranging from 100 to 1970 ft   | None. Project Area does not contain suitable habitat. 8 CNDDDB occurrences within 5 miles of Project.  |
| Point Reyes horkelia<br>( <i>Horkelia marinensis</i> )                           | None/None/1B.2            | Coastal dunes, Coastal prairie, Coastal scrub; On sandy soil; blooms May-Sep; at elevations ranging from 15 to 2475 ft  | Low. Grassland habitat in Project Area is managed and contains low quality habitat. The nearest CNDDDB occurrence is approximately 13 miles north of the study area. A recent herbarium specimen was also collected from Russian Gulch State Park approximately 5 miles north of the Project Area. |
| Harlequin lotus<br>( <i>Hosackia gracilis</i> )                                  | None/None/4.2             | Broadleafed upland forest, Cismontane woodland, Closed-cone coniferous forest, Coastal bluff scrub, Coastal prairie, Coastal scrub, Marshes and swamps, Meadows and seeps, North Coast coniferous forest, Valley and foothill grassland; often roadside wetlands; blooms Mar-Jul; at elevations ranging from 0 to 2295 ft | High. Project Area contains suitable habitat. 12 Calflora records within 5 miles of Project Area.  |
| Hair-leaved rush<br>( <i>Juncus supiniformis</i> )                               | None/None/2B.2            | Bogs and fens, Marshes and swamps (freshwater); near coast microhabitats; blooms Apr-May(Jun-Jul); at elevations ranging from 65 to 330 ft  | None. Project Area does not contain suitable habitat. 1 CNDDDB record within 5 miles of Project Area.  |
| Small groundcone<br>( <i>Kopsiopsis hookeri</i> )                                | None/None/2B.3            | Lower montane coniferous forest, North Coast coniferous forest, Upper montane coniferous forest; blooms Apr-Aug; at elevations ranging from 295 to 2905 ft  | None. Species occurs at elevation that exceeds Project Area. 1 Calflora record within 5 miles of Project Area.   |

| Common Name<br>(Scientific Name)   | Status:<br>State/Fed/CNPS | Habitat  | Potential to Occur   |
|--|---------------------------|--|--|
| Burke's goldfields<br>( <i>Lasthenia burkei</i> )                              | FE/SE/1B.1                | Vernal pools and wet meadows; blooms April-June, at elevations 50 to 1970 feet   | None. Suitable habitat does not occur in Project Area. No CNDDDB occurrences within 5 miles of Project Area. |
| Baker's goldfields<br>( <i>Lasthenia californica</i> ssp. <i>bakeri</i> )      | None/None/1B.2            | Closed-cone coniferous forest (openings), Coastal scrub, Marshes and swamps, Meadows and seeps; blooms Apr-Oct; at elevations ranging from 195 to 1705 ft  | None. Species occurs at elevation that exceeds Project Area. 1 CNDDDB record within 5 miles of Project Area. |
| Perennial goldfields<br>( <i>Lasthenia californica</i> ssp. <i>macrantha</i> ) | None/None/1B.2            | Coastal bluff scrub, Coastal dunes, Coastal scrub; blooms Jan-Nov; at elevations ranging from 15 to 1705 ft  | None. Project Area does not contain suitable habitat. 2 CNDDDB records within 5 miles of Project Area.       |
| Contra Costa goldfields<br>( <i>Lasthenia conjugens</i> )                      | FE/None/1B.1              | Alkaline or saline vernal pools and swales; blooms March-June; below 700 feet;   | None. Project Area does not contain suitable habitat. No CNDDDB occurrences within 5 miles of Project Area.  |
| Marsh pea ( <i>Lathyrus palustris</i> )  | None/None/2B.2            | Bogs and fens, Coastal prairie, Coastal scrub, Lower montane coniferous forest, Marshes and swamps, North Coast coniferous forest; Mesic microhabitats; blooms Mar-Aug; at elevations ranging from 5 to 330 ft   | Low. Project contains suitable habitat. 1 CNDDDB record within 5 miles of Project Area.                      |
| Broad-lobed leptosiphon<br>( <i>Leptosiphon latisectus</i> )                   | None/None/4.3             | Broadleafed upland forest, Cismontane woodland; blooms Apr-Jun; at elevations ranging from 560 to 4920 ft  | None. This species occurs at elevations that are higher than the Project Area.                               |
| Coast lily ( <i>Lilium maritimum</i> )   | None/None/1B.1            | Broadleafed upland forest, Closed-cone coniferous forest, Coastal prairie, Coastal scrub, Marshes and swamps (freshwater), North Coast coniferous forest; Roadside (sometimes) microhabitats; blooms May-Aug; at elevations ranging from 15 to 1560 ft | Moderate. Project contains suitable habitat. 6 CNDDDB records within 5 miles of Project Area.                |

| Common Name<br>(Scientific Name)   | Status:<br>State/Fed/CNPS | Habitat   | Potential to Occur   |
|--|---------------------------|---|--|
| Redwood lily ( <i>Lilium rubescens</i> )                                   | None/None/4.2             | Broadleafed upland forest, Chaparral, Lower montane coniferous forest, North Coast coniferous forest, Upper montane coniferous forest; Sometimes found on roadside or serpentine; blooms (Mar)Apr-Aug(Sep); at elevations ranging from 100 to 6265 ft | Low because of the distance to verified occurrences. The nearest Calflora occurrence of this species is approximately 12 miles east of the Project Area  |
| Heart-leaved twayblade ( <i>Listera cordata</i> )                          | None/None/4.2             | Bogs and fens, Lower montane coniferous forest, North Coast coniferous forest; blooms Feb-Jul; at elevations ranging from 15 to 4495 ft   | Moderate. Project contains suitable habitat. Project Area contains suitable habitat. 2 Calflora records within 5 miles of Project Area.  |
| Running-pine ( <i>Lycopodium clavatum</i> )                                | None/None/4.1             | Lower montane coniferous forest (mesic), Marshes and swamps, North Coast coniferous forest (mesic); Edges (often), Openings, and Roadside microhabitats; blooms Jun-Aug(Sep); at elevations ranging from 150 to 4020 ft                               | Low. Potential habitat in Project Area. No Calflora records within 5 miles of Project Area.  |
| Northern microseris ( <i>Microseris borealis</i> )                         | None/None/2B.1            | Bogs and fens, Lower montane coniferous forest, Meadows and seeps; Mesic microhabitats; blooms Jun-Sep; at elevations ranging from 3280 to 6560 ft  | None. Species occurs at elevation that exceeds Project Area. 1 CNDDDB record within 5 miles of the Project Area.   |
| Leafy-stemmed mitrewort ( <i>Mitellastr caulescens</i> )                   | None/None/4.2             | Broadleafed upland forest, Lower montane coniferous forest, Meadows and seeps, North Coast coniferous forest; Mesic and sometimes roadside microhabitats; blooms (Mar)Apr-Oct; at elevations ranging from 15 to 5580 ft                               | High. Potential habitat in Project Area. 1 CNDDDB record within 5 miles of the Project Area. 13 Calflora records within 5 miles of Project Area (one approximately 0.15 miles east of Project Area), |
| Seacoast ragwort ( <i>Packera bolanderi</i> var. <i>bolanderi</i> )        | None/None/2B.2            | Coastal scrub, North Coast coniferous forest; Roadsides(sometimes) microhabitats; blooms (Jan-Apr)May-Jul(Aug); at elevations ranging from 100 to 2135 ft   | Low. Potential habitat occurs in Project Area. 2 CNDDDB records within 5 miles of Project Area.  |
| North Coast phacelia ( <i>Phacelia insularis</i> var. <i>continentis</i> ) | None/None/1B.2            | Coastal bluff scrub, Coastal dunes; Rocky (sometimes), Sandy microhabitats; blooms Mar-May; at elevations ranging from 35 to 560 ft   | None. Project area does not contain suitable habitat. No CNDDDB occurrences within 5 miles of Project Area.  |

| Common Name<br>(Scientific Name)  | Status:<br>State/Fed/CNPS | Habitat  | Potential to Occur   |
|---|---------------------------|--|--|
| Bolander's beach pine<br>( <i>Pinus contorta</i> ssp.<br><i>bolanderi</i> ) | None/None/1B.2            | Closed-cone coniferous forest (podzol-like soil); at elevations ranging from 245 to 820 ft   | None. Project area does not contain suitable habitat. 11 CNDDDB occurrences within 5 miles of Project Area.  |
| White-flowered rein orchid<br>( <i>Piperia candida</i> )                    | None/None/1B.2            | Broadleafed upland forest, Lower montane coniferous forest, North Coast coniferous forest; serpentine (sometimes); blooms (Mar-Apr)May-Sep; at elevations ranging from 100 to 4300 ft                              | Low. Potential habitat in Project Area, but serpentine soils are not present. No CNDDDB record within 5 miles of Project Area.   |
| California pinefoot<br>( <i>Pityopus californicus</i> )                     | None/None/4.2             | Broadleafed upland forest, Lower montane coniferous forest, North Coast coniferous forest, Upper montane coniferous forest; Mesic microhabitats; blooms (Mar-Apr)May-Aug; at elevations ranging from 50 to 7300 ft | High. Suitable habitat occurs in Project Area. 5 Calflora records within 5 miles of Project Area, the closest of which is an historic occurrence is 0.15 mile is of Project.   |
| Nodding semaphore grass<br>( <i>Pleuropogon refractus</i> )                 | None/None/4.2             | Lower montane coniferous forest, Meadows and seeps, North Coast coniferous forest, riparian forest; occurs in mesic areas; blooms (Feb-Mar)Apr-Aug; at elevations ranging from 0 to 5250 ft                        | Moderate. Project Area contains suitable habitat. Calflora contains several occurrences of this species in Russian Gluch State Park approximately 5 miles north of the Project Area.                                     |
| Dwarf alkali grass<br>( <i>Puccinellia pumila</i> )                         | None/None/2B.2            | Marshes and swamps (coastal salt); found in mineral spring meadows and coastal salt marshes; blooms Jul; at elevations ranging from 5 to 35 ft   | None. Species occurs at elevations that are lower than the Project Area. Project Area does not contain suitable habitat. The nearest CNDDDB and Calflora occurrence is approximately 13 miles north of the Project Area. |
| Angel's hair lichen<br>( <i>Ramalina thrausta</i> )                         | None/None/2B.1            | North Coast coniferous forest on dead twigs and other lichens; at elevations ranging from 245 to 1410 ft   | None. Species occurs at elevation that exceeds Project Area. 1 CNDDDB occurrence within 5 miles of Project Area.   |

| Common Name<br>(Scientific Name)   | Status:<br>State/Fed/CNPS | Habitat  | Potential to Occur  |
|--|---------------------------|--|---|
| White beaked-rush<br>( <i>Rhynchospora alba</i> )                                  | None/None/2B.2            | Bogs and fens, Marshes and swamps (freshwater), Meadows and seeps; blooms Jun-Aug; at elevations ranging from 195 to 6695 ft   | None. Project Area does not contain suitable habitat. 1 CNDDDB occurrence within 5 miles of Project Area.                                   |
| Great burnet<br>( <i>Sanguisorba officinalis</i> )                                 | None/None/2B.2            | Bogs and fens, Broadleafed upland forest, Marshes and swamps, Meadows and seeps, North Coast coniferous forest, riparian forest; often serpentine microhabitats; blooms Jul-Oct; at elevations ranging from 195 to 4595 ft | None. Species occurs at elevation that exceeds Project Area, which lacks serpentine soils. 2 CNDDDB records within 5 miles of Project Area. |
| Point Reyes checkerbloom<br>( <i>Sidalcea calycosa</i> ssp. <i>rhizomata</i> )     | None/None/1B.2            | Marshes and swamps (freshwater, near coast); blooms Apr-Sep; at elevations ranging from 10 to 245 ft   | None. Project Area does not contain suitable habitat. 2 CNDDDB occurrences within 5 miles of Project Area.                                  |
| Maple-leaved checkerbloom<br>( <i>Sidalcea malachroides</i> )                      | None/None/4.2             | Broadleafed upland forest, Coastal prairie, Coastal scrub, North Coast coniferous forest, Riparian woodland; often disturbed areas; blooms (Mar)Apr-Aug; at elevations ranging from 0 to 2395 ft                           | Low. Project Area contains suitable habitat. No occurrences within 5 miles of Project Area.   |
| Siskiyou checkerbloom<br>( <i>Sidalcea malviflora</i> ssp. <i>patula</i> )         | None/None/1B.2            | Coastal bluff scrub, Coastal prairie, North Coast coniferous forest; often roadside and roadcut microhabitats; blooms (Mar-Apr)May-Aug; at elevations ranging from 50 to 4035 ft   | Low. Project Area contains suitable habitat. 1 occurrence within 5 miles of Project Area.   |
| Purple-stemmed checkerbloom<br>( <i>Sidalcea malviflora</i> ssp. <i>purpurea</i> ) | None/None/1B.2            | Broadleafed upland forest, Coastal prairie; blooms May-Jun; at elevations ranging from 50 to 280 ft  | Low. Potential habitat in Project Area. No CNDDDB occurrences within 5 miles of Project.  |

| Common Name<br>(Scientific Name)  | Status:<br>State/Fed/CNPS | Habitat  | Potential to Occur   |
|---|---------------------------|--|--|
| Trifoliate laceflower<br>( <i>Tiarella trifoliata</i> var.<br><i>trifoliata</i> ) | None/None/3.2             | Lower montane coniferous forest, North Coast coniferous forest; moist shady banks; blooms (May)Jun-Aug; at elevations ranging from 560 to 4920 feet  | None. This species is found at elevations that are higher than the Project Area. Calflora reports this species in Jug Handle State Park approximately 9 miles north of the Project Area, and also from an occurrence 8 miles east of the Project Area. |
| Showy Indian clover<br>( <i>Trifolium amoenum</i> )                               | FE/None/1B.1              | Low elevation grasslands, including swales and disturbed areas; blooms April-June  | None. Low quality habitat occurs in managed grassland. The closest extant CNDDDB occurrence is approximately 83 miles south of the study area.   |
| Santa Cruz clover<br>( <i>Trifolium buckwestiorum</i> )                           | None/None/1B.1            | Broadleafed upland forest, Cismontane woodland, Coastal prairie; Gravelly margins microhabitats; blooms Apr-Oct; at elevations ranging from 115 to 2000 ft   | Low. Grassland offers low quality habitat. No CNDDDB occurrences within 5 miles of Project.  |
| Monterey clover<br>( <i>Trifolium trichocalyx</i> )                               | FE/SE/1B.1                | In Monterey County found in closed-cone coniferous forest (burned areas, openings, sandy); In Mendocino County, found in coniferous forest dominated by redwood ( <i>Sequoia sempervirens</i> ), Douglas fir ( <i>Pseudotsuga menziesii</i> ) and tanoak ( <i>Notholithocarpus densiflorus</i> ) at elevations ranging from 100 to 1000 feet; Generally, germinates in response to fire and other disturbance; blooms Apr-Jun; at elevations ranging from 100 to 1000 ft | Low. Project Area contains low quality habitat. No CNDDDB occurrences within 5 miles of Project. The nearest CNDDDB occurrence is 11.5 miles northeast of the study area (Occurrence No. 6).   |
| Coastal triquetrella<br>( <i>Triquetrella californica</i> )                       | None/None/1B.2            | Coastal bluff scrub, Coastal scrub; Grows within 30m from the coast in coastal scrub, grasslands and in open gravels on roadsides, hillsides, rocky slopes, and fields. On gravel or thin soil over outcrops; Bryophyte (moss); at elevations ranging from 0 to 490 ft   | None because the lack of suitable habitat and the distance to known occurrences. Calflora reports two 1968 herbarium collections from MacKerricher State Park over 20 miles north of the Project Area.   |

| Common Name<br>( <i>Scientific Name</i> )  | Status:<br>State/Fed/CNPS | Habitat   | Potential to Occur  |
|--|---------------------------|---|---|
| Methuselah's beard lichen ( <i>Usnea longissima</i> )  | None/None/4.2             | Broadleafed upland forest, North Coast coniferous forest; on tree branches of old growth hardwoods and conifers; at elevations ranging from 165 to 4790 ft      | Low. Project Area contains few old growth trees. Species known to occur in quadrangle containing the Project Area.  |
| Fringed false-hellebore ( <i>Veratrum fimbriatum</i> )   | None/None/4.3             | Bogs and fens, Coastal scrub, Meadows and seeps, North Coast coniferous forest; Mesic microhabitats; blooms Jul-Sep; at elevations ranging from 10 to 985 ft    | High. Suitable habitat occurs in Project Area. 7 Calflora records within 5 miles of Project Area, of which four are within the Park and two are within 0.15 miles.              |
| Alpine marsh violet ( <i>Viola palustris</i> )   | None/None/2B.2            | Bogs and fens (coastal), Coastal scrub (mesic); blooms Mar-Aug; Swampy; shrubby places in coastal scrub or coastal bogs; at elevations ranging from 0 to 490 ft | None. Suitable habitat is not found within the Project Area. Calflora reports a 1946 herbarium collection from MacKerricher State Park over 20 miles north of the Project Area. |
| <p>Notes:</p> <p>FE = listed as Endangered under federal Endangered Species Act<br/>                     SE = listed as Endangered under California Endangered Species Act<br/>                     ST = listed as Threatened under California Endangered Species Act</p> <p>California Rare Plant Ranks (CRPR): 1A = presumed extinct in California and rare or extinct elsewhere; 1B = rare, threatened, or endangered in California and elsewhere; 2A = presumed extirpated in California but common elsewhere; 2B = rare, threatened, or endangered in California but more common elsewhere; 3 = need more information; 4 = Watch List: plants of limited distribution. Threat code extensions are: .1 = seriously threatened in California; .2 = moderately threatened in California; and .3 not very threatened in California. Species with CRPR 3 or 4 ratings are not included on CNDDDB unless they were formerly ranked with a 1 or 2.</p> |                           |   |   |

**Table 2: Plant species observed (April 14, 2025 and May 28, 2025)**

| Taxonomic Group | Family          | Scientific Name                                     | Common Name             | Status |
|-----------------|-----------------|---|-------------------------|--------|
| Fern            | Athyriaceae     | <i>Athyrium filix-femina</i> var. <i>cyclosorum</i> | Western lady fern       |        |
| Fern            | Dryopteridaceae | <i>Polystichum munitum</i>                          | Western sword fern      |        |
| Fern            | Equisetaceae    | <i>Equisetum telmateia</i> ssp. <i>braunii</i>      | Giant horsetail         |        |
| Fern            | Polypodiaceae   | <i>Polypodium glycyrrhiza</i>                       | Licorice fern           |        |
| Fern            | Pteridaceae     | <i>Adiantum aleuticum</i>                           | Five finger fern        |        |
| Gymnosperm      | Pinaceae        | <i>Abies grandis</i>                                | Grand fir               |        |
| Gymnosperm      | Pinaceae        | <i>Pseudotsuga menziesii</i> var. <i>menziesii</i>  | Douglas-fir             |        |
| Dicot           | Anacardiaceae   | <i>Toxicodendron diversilobum</i>                   | Poison oak              |        |
| Dicot           | Apiaceae        | <i>Heracleum maximum</i>                            | Cowparsnip              |        |
| Dicot           | Apiaceae        | <i>Osmorhiza berteroi</i>                           | Sweet cicely            |        |
| Dicot           | Apiaceae        | <i>Sanicula crassicaulis</i>                        | Pacific sanicle         |        |
| Dicot           | Araliaceae      | <i>Aralia californica</i>                           | California spikenard    |        |
| Dicot           | Araliaceae      | <i>Hedera helix</i>                                 | English ivy             | x      |
| Dicot           | Asteraceae      | <i>Bellis perennis</i>                              | Lawn daisy              | x      |
| Dicot           | Asteraceae      | <i>Carduus pycnocephalus</i>                        | Italian thistle         | x      |
| Dicot           | Asteraceae      | <i>Petasites frigidus</i> var. <i>palmatus</i>      | Western coltsfoot       |        |
| Dicot           | Asteraceae      | <i>Sonchus asper</i>                                | Prickly sowthistle      | x      |
| Dicot           | Asteraceae      | <i>Sonchus oleraceus</i>                            | Common sowthistle       | x      |
| Dicot           | Asteraceae      | <i>Taraxacum officinale</i>                         | Dandelion               | x      |
| Dicot           | Betulaceae      | <i>Alnus rubra</i>                                  | Red alder               |        |
| Dicot           | Betulaceae      | <i>Corylus cornuta</i> var. <i>californica</i>      | Beaked hazelnut         |        |
| Dicot           | Boraginaceae    | <i>Myosotis latifolia</i>                           | Broadleaf forget-me-not | x      |
| Dicot           | Brassicaceae    | <i>Cardamine californica</i>                        | Milkmaids               |        |
| Dicot           | Brassicaceae    | <i>Cardamine oligosperma</i>                        | Idaho bittercress       |        |
| Dicot           | Caryophyllaceae | <i>Stellaria media</i>                              | Chickweed               | x      |

| Taxonomic Group | Family          | Scientific Name                                | Common Name            | Status |
|-----------------|-----------------|--|------------------------|--------|
| Dicot           | Cucurbitaceae   | <i>Marah oregana</i>                           | Coastal manroot        |        |
| Dicot           | Fagaceae        | <i>Notholithocarpus densiflorus</i>            | Tanoak                 |        |
| Dicot           | Grossulariaceae | <i>Ribes bracteosum</i>                        | Stink Currant          |        |
| Dicot           | Grossulariaceae | <i>Ribes sanguineum</i> var. <i>glutinosum</i> | Red-flowering Currant  |        |
| Dicot           | Lamiaceae       | <i>Lamium purpureum</i>                        | Purple deadnettle      | x      |
| Dicot           | Lamiaceae       | <i>Stachys ajugoides</i>                       | Bugle hedgenettle      |        |
| Dicot           | Montiaceae      | <i>Claytonia perfoliata</i>                    | Miner's lettuce        |        |
| Dicot           | Montiaceae      | <i>Claytonia sibirica</i>                      | Candy flower           |        |
| Dicot           | Myricaceae      | <i>Morella californica</i>                     | Pacific wax myrtle     |        |
| Dicot           | Oxalidaceae     | <i>Oxalis oregana</i>                          | Redwood sorrel         |        |
| Dicot           | Oxalidaceae     | <i>Oxalis smalliana</i>                        | Redwood sorrel         |        |
| Dicot           | Papaveraceae    | <i>Dicentra formosa</i>                        | Pacific Bleeding Heart |        |
| Dicot           | Polygonaceae    | <i>Rumex crispus</i>                           | Curly dock             | x      |
| Dicot           | Ranunculaceae   | <i>Aquilegia formosa</i>                       | Columbine              |        |
| Dicot           | Ranunculaceae   | <i>Ranunculus muricatus</i>                    | Pricklefruit buttercup | x      |
| Dicot           | Ranunculaceae   | <i>Ranunculus repens</i>                       | Creeping buttercup     | x      |
| Dicot           | Rhamnaceae      | <i>Frangula purshiana</i>                      | Cascara sagrada        |        |
| Dicot           | Rosaceae        | <i>Rubus parviflorus</i>                       | Thimbleberry           |        |
| Dicot           | Rosaceae        | <i>Rubus spectabilis</i>                       | Salmonberry            |        |
| Dicot           | Rosaceae        | <i>Rubus ursinus</i>                           | California blackberry  |        |
| Dicot           | Rubiaceae       | <i>Galium aparine</i>                          | Common bedstraw        |        |
| Dicot           | Rubiaceae       | <i>Galium triflorum</i>                        | Fragrant bedstraw      |        |
| Dicot           | Rubiaceae       | <i>Sherardia arevensis</i>                     | Field madder           | x      |
| Dicot           | Saxifragaceae   | <i>Tellima grandiflora</i>                     | Fringe cups            |        |
| Dicot           | Saxifragaceae   | <i>Tiarella trifoliata</i>                     | Threeleaf Foamflower   |        |
| Dicot           | Urticaceae      | <i>Urtica gracilis</i>                         | Stinging nettle        |        |
| Dicot           | Viburnaceae     | <i>Sambucus racemosa</i> var. <i>racemosa</i>  | Red elderberry         |        |
| Dicot           | Violaceae       | <i>Viola glabella</i>                          | Stream violet          |        |

| Taxonomic Group | Family        | Scientific Name                                | Common Name           | Status   |
|-----------------|---------------|--|-----------------------|----------|
| Dicot           | Violaceae     | <i>Viola sempervirens</i>                      | Redwood violet        |          |
| Monocots        | Cyperaceae    | <i>Carex leptopoda</i>                         | Slender-footed sedge  |          |
| Monocots        | Cyperaceae    | <i>Scirpus microcarpus</i>                     | Panicled bulrush      |          |
| Monocots        | Melanthiaceae | <i>Veratrum fimbriatum</i>                     | Fringed cornlily      | CRPR 4.3 |
| Monocots        | Poaceae       | <i>Bromus diandrus</i>                         | Ripgut brome          | x        |
| Monocots        | Poaceae       | <i>Bromus laevipes</i>                         | Narrow flowered brome |          |
| Monocots        | Poaceae       | <i>Bromus sitchensis</i> var. <i>carinatus</i> | California brome      |          |
| Monocots        | Poaceae       | <i>Bromus vulgaris</i>                         | Columbia brome        |          |
| Monocots        | Poaceae       | <i>Festuca arundinacea</i>                     | Alta fescue           | x        |
| Monocots        | Poaceae       | <i>Festuca bromoides</i>                       | Brome fescue          | x        |
| Monocots        | Poaceae       | <i>Glyceria elata</i>                          | Tall mannagrass       |          |
| Monocots        | Poaceae       | <i>Hordeum murinum</i> ssp. <i>leporinum</i>   | Foxtail barley        | x        |
| Monocots        | Poaceae       | <i>Poa annua</i>                               | Annual blue grass     | x        |
| Monocots        | Poaceae       | <i>Poa kelloggii</i>                           | Redwood blue grass    |          |
| Monocots        | Poaceae       | <i>Poa pratensis</i>                           | Kentucky blue grass   | x        |
| Monocots        | Poaceae       | <i>Poa trivialis</i>                           | Rough blue grass      | x        |
| Monocots        | Poaceae       | <i>Trisetum cernuum</i>                        | Nodding false oat     |          |

Notes:

x = Species considered non-native or introduced to the study area  
 FE = listed as Endangered under federal Endangered Species Act  
 SE = listed as Endangered under California Endangered Species Act  
 ST = listed as Threatened under California Endangered Species Act

California Rare Plant Ranks (CRPR): 1A = presumed extinct in California and rare or extinct elsewhere; 1B = rare, threatened, or endangered in California and elsewhere; 2A = presumed extirpated in California but common elsewhere; 2B = rare, threatened, or endangered in California but more common elsewhere; 3 = need more information; 4 = Watch List: plants of limited distribution. Threat code extensions are: .1 = seriously threatened in California; .2 = moderately threatened in California; and .3 not very threatened in California. Species with CRPR 3 or 4 ratings are not included on CNDDb unless they were formerly ranked with a 1 or 2.

# **Appendix A**

# **Photographs**



Photograph 1. Downstream of the bridge facing northeast toward the old bridge (May 28, 2025).



Photograph 2. Downstream of the bridge facing west away from the old bridge (May 28, 2025).



Photograph 3. Bank stabilization area downstream of the old bridge (May 28, 2025).



Photograph 4. Upstream of the bridge facing west toward the old bridge (April 15, 2025).



Photograph 5. Upstream of the bridge facing west toward the old bridge. This photograph shows the location of the new crossing. (April 15, 2025).



Photograph 6. The location of the new crossing upstream of the old bridge; taken from the north bank of Little River facing southwest (April 15, 2025).



Photograph 7. Campsite within the study area adjacent to the south bank of Little River (April 15, 2025).



Photograph 8. Fringed false hellebore (*Veratrum fimbriatum*) observed along the south bank of Little River in the study area.