

COUNTY OF MENDOCINO – FACILITIES AND FLEET DIVISION

**SPECIFICATION: MOTOR VEHICLE
2016 4x4 SUV
2016 OR 2017 FORD EXPEDITION XLT 4x4
QUANTITY NEEDED: 1
COLOR: WHITE**

VENDOR: _____

VEHICLE DESCRIPTION: 2016 OR 2017 FORD EXPEDITION XLT 4x4

REPLACING VEHICLES 10-008

SPECIFICATION	INCLUDED	NOT- INCLUDED	OTHER OPTIONS
FUEL ECONOMY			
City min.:			
Highway min.:			
Combined:			
Fuel: Reg/Unl.			
POWER TRAIN			
Engine: 3.5L V6 EcoBoost			
Horse Power			
Drive Type: 4WD			
Transmission:6 Speed			
Column Shifter			
SUSPENSION & HANDLING			
Front Suspension: I-Beam			
Rear Suspension: Multi-Link			
Steering Activation: Electric Power Assist			
Steering Type: Rack-Pinion			
Brakes: 4-Wheel Disc			
WHEELS AND TIRES			
Tires: All Terrain			
Wheel Diameter: 17"			
Wheel Width: 7.5"			
SAFETY AND SECURITY			
Passenger Front Impact Airbag			
Driver Side Impact Airbag: Seat-mounted			
Passenger Side Impact Airbag: Seat-mounted			
Overhead Airbag: Curtain			
Front Passenger Airbag Occupancy Sensor			
Side Impact Beams			
Height-Adjustable Seatbelts: Front			
Seatbelt Pre-Tensioners: Front			
ABS: 4-Wheel			
Panic Brake Assist			
Traction Control ABS and Driveline			
Electronic Stability Control			

Panic Alarm			
Security System			
Immobilizer			
LIGHTING AND INSTRUMENTS			
Headlight Beam: Halogen			
Exterior Light Control: Fully Automatic			
Delay Off Headlamps			
Daytime Running Lights			
Dome Light Fade			
Illuminated Entry			
Front Reading Lights			
Windshield Wipers: Variable/Intermittent			
Window Tint Light			
Tachometer			
Engine Temperature Gauge			
Low Fuel Warning			
Low Tire Pressure Warning: Tire Specific			
Maintenance Reminder			
Driver Information: Center			
Exterior Temperature			
Clock in Radio Display			
Compass			
Trip Computer			
BODY EXTERIOR			
Body Material: Full Galvanized Steel			
Number of Doors: 4			
Driver Mirror: Power Remote			
Passenger Mirror: Power Remote			
Front Bumper: Body-colored			
Rear Bumper: Body-colored			
VEHICLE INTERIOR			
AM/FM			
Air Conditioning: Manual			
External Digital Memory Control			
Door Locks: Power with 2 Stage Unlock			
Remote/Keyless Entry: Key Fob (all doors)			
Front Windows: Power			
Rear Windows: Power			
Cargo Tie Downs			
Cruise Control w/Steering Wheel Controls			
Front Beverage Holders			
Rear Beverage Holders			
12V DC Power Outlet: 2			
Passenger Door Bin: Yes			
Overhead Console:			
Floor Console			
Glove Box: Illuminated			
Driver Vanity Mirror: Illuminated			
Tilting Steering Wheel: Manual			
Telescoping Steering Wheel: Manual			
SEATS AND TRIM / CLOTH CAPTAN CHAIRS			
Seating Capacity:			
Driver Seat Way Direction Control:			
Front Passenger Seat Way-Direction Control:			
Front Head Restraints: Adjustable			
Rear Head Restraints: Adjustable			

Rear Bench Seat: Folding 60-40			
Seat Material: Cloth/Leatherette/Vinyl			
Floor Mats: Vinyl Front/Rear			
Floor Trim: Carpet			
Headliner: Cloth			
Steering Wheel: Urethane			
ENTERTAINMENT/COMMUNICATION			
AM/FM Radio			
External Digital Memory			
Voice-Activated Audio			
Speakers: 6			
Antenna: Window Grid			
Wireless Phone Connectivity: Bluetooth			
CAPACITIES			
Seating: 5			
Passenger Volume			
Max Cargo Volume			
Fuel Tank Capacity			
WARRANTY			
Basic: 36 Month			
Basic Distance: 36,000 Miles			
Powertrain: 60 Months			
Powertrain Distance: 60,000 Miles			
Roadside Assistance: 60 Months/60,000 Miles			
Corrosion Perforation: 60 Months			
Corrosion Perforation Distance: Unlimited Miles			
ADD-ONS			
Spare Tire			
Hands Free Phone Capabilities			
PRICE			
LICENSE			

WARRANTY: The manufacturer's regular new vehicle warranty shall apply to each vehicle procured against this specification. All warranty certificates and/or cards shall be supplied with each vehicle delivered. The warranty shall be factory authorized and shall cover not less than three (3) years/36,000 miles bumper to bumper, no charge parts and labor, starting from the date the vehicle is placed into service. The receiving agency will notify the dealer of the actual "in-service" date. All emission-related components shall be warranted in compliance with CARB and Federal requirements.

DOCUMENTATION PREPARED AS FOLLOWS:
 County of Mendocino
 841 Low Gap Road
 Ukiah, CA 95482

NOTE: If "Included" is checked that means "as specified". If "Not Included" is checked that means the specification is different and a separate sheet of paper must accompany your bid package explaining the exception to the specification.

VENDOR TO GIVE COUNTY A MINIMUM OF 48 HOURS ADVANCED DELIVERY NOTICE

A SIGNATURE IS REQUIRED ON EVERY SPECIFICATION SHEET.

COMPANY NAME: _____

SIGNATURE: _____

DATE: _____

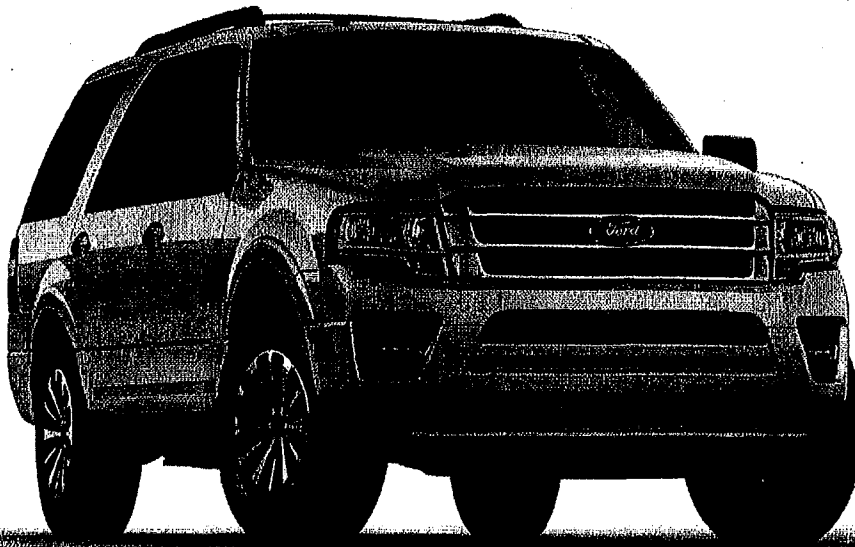
NOTICE: YOUR BID WILL BE REJECTED IF YOU FAIL TO COMPLETE AND RETURN THE SPECIFICATION SHEETS ALONG WITH THE "REQUEST FOR QUOTATIONS" FORM COMPLETED AND SIGNED.



Go Further

Have vehicle questions? Call (800) 923-9484

2016 Expedition XLT



Payment

Base MSRP ^{S1}	\$48,360
Total of Options ^{S4}	\$0
Destination Charges ^{S17}	\$1,195
Total MSRP ^{S16}	\$49,555
Available Incentives ^{S3}	-\$1,750

RCL Customer Cash

Program #50362: Take new retail delivery from dealer stock by 07/05/2016. Not all Expedition models may qualify. See dealer for residency restrictions and complete details.

Amount: \$1,750, Offer Valid: Apr 5, 2016-Jul 5, 2016

Net Price^{S5} **\$47,805**

\$485 Per Month^{S6} Based on \$4,956 down payment, 39 month term and 10,500 mileage, \$0 trade-in-value

Standard Features

\$0

Interior Features

- Front cloth bucket seats
- Second-row 40/20/40 split bench reclining fold-flat seat with CenterSlide®
- Third-row 60/40 split bench fold-flat-to-the-floor seat
- Power seat
- Manual air conditioning
- Rear auxiliary climate control
- SYNC® - Enhanced Voice Recognition Communications and Entertainment System
- SiriusXM Satellite Radio
- Audio input jack
- AM/FM Premium Sound System with a single-disc CD/MP3 player
- Overhead console with sunglass holder and conversation mirror
- Large front floor console
- Cupholders
- Analog instrumentation with tachometer and single 4.2-inch cluster display
- Power door locks and rear-door child-safety locks
- Power windows with one-touch-up/-down driver's window
- Power rear quarter windows
- Carpeted floor
- Carpeted first- and second-row floor mats
- Illuminated entry lighting
- Power-adjustable foot pedals
- Message center
- Auto-dimming rearview mirror
- Reverse Sensing System
- Powerpoints (4)
- Floor shifter
- Leather-wrapped manual tilt/telescoping steering wheel with audio controls
- Cruise control
- Universal garage door opener
- Dual illuminated vanity mirrors on front visors
- Passenger-assist handles

Exterior Features

- Front and rear wipers
- Liftgate with flip-up glass
- Limited with color-keyed lower bumpers and cladding
- Chromed exhaust
- Chrome door handles
- LED front fog lamps
- Quad-beam reflector headlamps
- Black luggage rack side rails
- Black luggage rack crossbars
- Black running boards
- Easy Fuel® capless fuel filler
- Body-color lower bodyside cladding and wheel-lip moldings
- Bright Chrome grille with Magnetic painted inner accents
- Platform running boards
- Trailer hitch receiver
- Black power adjustable heated mirrors with security approach lamps
- Privacy glass in rear quarter, rear doors and liftgate glass
- Solar-tinted windshield and front door windows
- Integrated blind spot mirrors

Power and Handling

- 3.5L EcoBoost® V6 engine
- Six-speed SelectShift® automatic transmission
- Battery saver
- 28-gallon fuel tank
- Rear-wheel drive
- Fully boxed frame
- Independent rear suspension
- Electronic Power-Assist (EPAS) rack-and-pinion steering
- Front and rear stabilizer bars
- AdvanceTrac® with Roll Stability Control™ (RSC®)
- Trailer Sway Control
- Traction Control
- Non-limited-slip 3.15 rear axle (4x2 only)
- 18" bright machined-aluminum wheels with Magnetic painted pockets
- Underbody-mounted full-size spare tire
- P275/65R18 all-terrain tires

Safety

mileage calculation determined by your dealer. A charge is assessed for any mileage driven that exceeds this limit. Not all buyers will qualify for financing or a lease. Contact your local Ford, Lincoln or Mercury Dealer for details.

S7 While dealer inventory is generally updated on a daily basis, there are no guarantees that the inventory shown will be available at the dealership. Mid-model-year manufacturing changes, as well as dealer-added accessories on the actual vehicle may differ from the options and features listed. Vehicles that are identified as 'Exact Matches' may have a different price or different features not represented on the site. We make every effort to provide you with the most accurate, up-to-date information, however, only your local Ford dealer can provide you with information regarding actual vehicle availability.

S8 Dealer Accessories are defined as items that do not appear on the factory window sticker that are installed by a Ford or Lincoln Dealer. Actual Prices for all accessories may vary and depend upon your dealer. Prices DO NOT include installation or painting, which may be required for particular items. Please check with your authorized dealer for complete pricing accuracy for all accessories and parts.

Genuine Ford Accessories will be warranted for whichever provides you the greatest benefit: 12 months or 12,000 miles (whichever occurs first) or the remainder of your Bumper-to-Bumper 3-year/36,000-mile New Vehicles Warranty. Contact your local Ford, Lincoln or Mercury dealer for details and a copy of the limited warranty.

Ford Licensed Accessories (FLA) are warranted by the accessories manufacturer's warranty. Contact your Ford, Lincoln or Mercury Dealer for details regarding the manufacturer's limited warranty and/or a copy of the FLA product limited warranty offered by the accessory manufacturer.

Most Ford Racing Performance Parts are sold with no warranty. Ford Racing Performance Parts are sold "As Is", "With All Faults", "As They Stand" and without any express warranty whatsoever, unless otherwise expressly designated herein. To determine which parts come with a warranty from the original manufacturer, or from Ford Racing, please contact the Ford Racing Techline at (800) FORD788.

S9 The "Trade-In Value" of your vehicle is an estimate, only, and many factors that cannot be assessed without a physical inspection of the vehicle may affect actual value. For purposes of this website, we use the services of a third-party vendor to provide Trade-In Value calculations. While we believe this information is reliable, we are not responsible for and do not guarantee the accuracy or reliability of the information. Please see your local Ford dealer for information regarding actual trade-in availability and value.

S10 AXZ Plan pricing, including AXZ Plan option pricing, is exclusively for eligible Ford Motor Company employees, friends and family members of eligible employees, and Ford Motor Company eligible partners. Restrictions apply. See your Ford or Lincoln dealer for complete details and qualifications. Ford Motor Company reserves the right to modify the terms of AXZ Plan pricing or availability at any time. Some dealers may also choose not to participate in plan pricing. Contact your local dealer to determine final pricing.

S11 EPA estimated city/highway mpg based on base engine/transmission configuration. Actual mileage will vary.

S12 Towing - Properly equipped.

S13 For Dealer Ordered vehicles, the vehicle has already been ordered by the dealer and is in the process of being manufactured by the factory. If you are interested in the vehicle marked "Dealer Ordered", contact the dealership for a delivery estimate.

S14 The "estimated selling price" is for estimation purposes only and the figures presented do not represent an offer that can be accepted by you. See your local dealer for vehicle availability and actual price.

The "estimated capitalized cost" is for estimation purposes only and the figures presented do not represent an offer that can be accepted by you. See your local dealer for vehicle availability, actual price, and financing options.

S15 The "amount financed" is for estimation purposes only and the figures presented do not represent an offer that can be accepted by you. See your local dealer for vehicle availability, actual price, and financing options.

The "adjusted capitalized cost" is for estimation purposes only and the figures presented do not represent an offer that can be accepted by you. See your local dealer for vehicle availability, actual price, and financing options.

S16 Total MSRP is Base MSRP plus options, destination and delivery charges. Excludes taxes, title, and registration fees.

S17 Destination Charges are associated with getting the vehicle from the manufacturer to the dealership. Prices listed are MSRP and are based on information updated on this website from time to time.

For Manufacturer Specific Disclosures See Below

1 Starting MSRP excludes destination/delivery charge, taxes, title and registration. Optional equipment not included. Starting A, Z and X Plan price is for qualified, eligible customers and excludes document fee, destination/delivery charge, taxes, title and registration. Not all vehicles qualify for A, Z or X Plan. All Mustang Shelby GT350 and Shelby GT350R prices exclude gas guzzler tax.

2 EPA-estimated city/hwy mpg. See fuelconomy.gov for fuel economy of other engine/transmission combinations. Actual mileage will vary. MPGe is the EPA equivalent measure of gasoline fuel efficiency for electric mode operation.

DISCLOSURES