

COUNTY OF MENDOCINO – FACILITIES AND FLEET DIVISION

**SPECIFICATION: MOTOR VEHICLE
 2016 OR 2017 FLEET 3/4 TON 4X4 TRUCK
 FORD, CHEVROLET
 QUANTITY NEEDED: 1
 COLOR: WHITE**

VENDOR: _____

VEHICLE DESCRIPTION: 2016 OR 2017 ¾ TON 4x4 – LONG BOX_
AFTER PURCHASE WILL NEED PURCHASE AND INSTALLATION OF CROSS BED TOOL BOX AND SPRAY
IN BED LINER.
 REPLACING : 26-029 (PARKS)

SPECIFICATION	INCLUDED	NOT- INCLUDED	OTHER OPTIONS
FUEL ECONOMY			
City min.			
Highway min.			
Combined:			
Fuel: Unleaded			
POWER TRAIN			
Engine:			
Horse Power:			
Drive Type: 4WD			
Transmission: Six-Speed Automatic			
SUSPENSION & HANDLING			
Front Suspension:			
Rear Suspension: Non-Limited-Slip			
Steering Activation: Electric Power Assist			
Steering Type: Rack-Pinion			
Brakes: 4-Wheel Disc			
Tow package			
WHEELS AND TIRES			
Tires: All Terrain			
Wheel Diameter: 17"			
Wheel Width: 7"			
SAFETY AND SECURITY			
Passenger Front Impact Airbag			
Driver Side Impact Airbag: Seat-mounted			
Passenger Side Impact Airbag: Seat-mounted			
Overhead Airbag: Curtain			
Front Passenger Airbag Occupancy Sensor			
Side Impact Beams			
Height-Adjustable Seatbelts: Front			
Seatbelt Pre-Tensioners: Front			
ABS: 4-Wheel			
Panic Brake Assist			
Traction Control ABS and Driveline			
Electronic Stability Control			

Panic Alarm			
Security System			
Immobilizer			
LIGHTING AND INSTRUMENTS			
Headlight Beam: Halogen			
Exterior Light Control: Fully Automatic			
Delay Off Headlamps			
Daytime Running Lights			
Dome Light Fade			
Illuminated Entry			
Front Reading Lights			
Windshield Wipers: Variable/Intermittent			
Window Tint Light			
Tachometer			
Engine Temperature Gauge			
Low Fuel Warning			
Low Tire Pressure Warning: Tire Specific			
Maintenance Reminder			
Driver Information: Center			
Exterior Temperature			
Clock in Radio Display			
Compass			
Trip Computer			
BODY EXTERIOR			
Body Material: Full Galvanized Steel			
Number of Doors: 2			
Driver Mirror: Power Remote			
Passenger Mirror: Power Remote			
Front Bumper: Body-colored			
Rear Bumper: Body-colored			
VEHICLE INTERIOR			
Air Conditioning: Manual			
External Digital Memory Control			
Door Locks: Power with 2 Stage Unlock			
Remote/Keyless Entry: Key Fob (all doors)			
Front Windows: Power			
Cargo Tie Downs			
Cruise Control w/Steering Wheel Controls			
Front Beverage Holders			
12V DC Power Outlet:			
Passenger Door Bin: Yes			
Floor Console:			
Glove Box: Illuminated			
Driver Vanity Mirror: Illuminated			
Tilting Steering Wheel: Manual			
Telescoping Steering Wheel: Manual			
SEATS AND TRIM			
Bench Seat			
Seating Capacity: 3			
Driver Seat Way Direction Control:			
Front Passenger Seat Way-Direction Control:			
Front Head Restraints: Adjustable			

Seat Material: Vinyl			
Floor Mats: Vinyl			
Floor Trim: Carpet			
Headliner: Cloth			
Steering Wheel: Urethane			
ENTERTAINMENT/COMMUNICATION			
AM/FM			
External Digital Memory			
Voice-Activated Audio			
Speakers:			
Antenna: Window Grid			
Wireless Phone Connectivity: Bluetooth			
CAPACITIES			
Seating: 3			
Passenger Volume			
Max Cargo Volume:			
Fuel Tank Capacity:			
WARRANTY			
Basic: 36 Month			
Basic Distance: 36,000 Miles			
Powertrain: 60 Months			
Powertrain Distance: 60,000 Miles			
Roadside Assistance: 60 Months/60,000 Miles			
Corrosion Perforation: 60 Months			
Corrosion Perforation Distance: Unlimited Miles			
ADD-ONS			
Spare Tire			
Hands Free Phone Capabilities			
PRICE			
LICENSE			

WARRANTY: The manufacturer's regular new vehicle warranty shall apply to each vehicle procured against this specification. All warranty certificates and/or cards shall be supplied with each vehicle delivered. The warranty shall be factory authorized and shall cover not less than three (3) years/36,000 miles bumper to bumper, no charge parts and labor, starting from the date the vehicle is placed into service. The receiving agency will notify the dealer of the actual "in-service" date. All emission-related components shall be warranted in compliance with CARB and Federal requirements.

DOCUMENTATION PREPARED AS FOLLOWS:
 County of Mendocino
 841 Low Gap Road
 Ukiah, CA 95482

NOTE: If "Included" is checked that means "as specified". If "Not Included" is checked that means the specification is different and a separate sheet of paper must accompany your bid package explaining the exception to the specification.

VENDOR TO GIVE COUNTY A MINIMUM OF 48 HOURS ADVANCED DELIVERY NOTICE

A SIGNATURE IS REQUIRED ON EVERY SPECIFICATION SHEET.

COMPANY NAME: _____

SIGNATURE: _____

DATE: _____

NOTICE: YOUR BID WILL BE REJECTED IF YOU FAIL TO COMPLETE AND RETURN THE SPECIFICATION SHEETS ALONG WITH THE "REQUEST FOR QUOTATIONS" FORM COMPLETED AND SIGNED.



Print



2016 Silverado 2500HD Regular Cab, Long Box WT RWD

Price

\$33,840* OR

Includes \$1,000
Cash Back

FINANCE ESTIMATE

\$505^b per month
for 72 months

4.9% APR for Well-Qualified
Buyers. Amount Financed
\$31,425. \$3,415 down
payment.

Starting MSRP ¹	\$32,965
Destination Freight Charge	\$1,195
Options	
Summit White	\$0
Dark Ash with Jet Black Interior Accents, Vinyl seat trim	\$0
17" painted steel wheels	\$0
Pickup box	\$0
Vortec® 6.0L Variable Valve Timing V8 SFI engine	\$0
Heavy-duty 6-speed electronically controlled automatic transmission	\$0
9300-lb. GVWR	\$0
4.10 rear axle ratio (gas engine)	\$0
Trailer equipment	<u>Remove</u> \$555
Audio system with 4.2" diagonal color screen with AM/FM, USB ports and auxiliary jack	\$0
Front 40/20/40 split-bench seat	Standard
LT245/75R17E all-season, blackwall tires	\$0

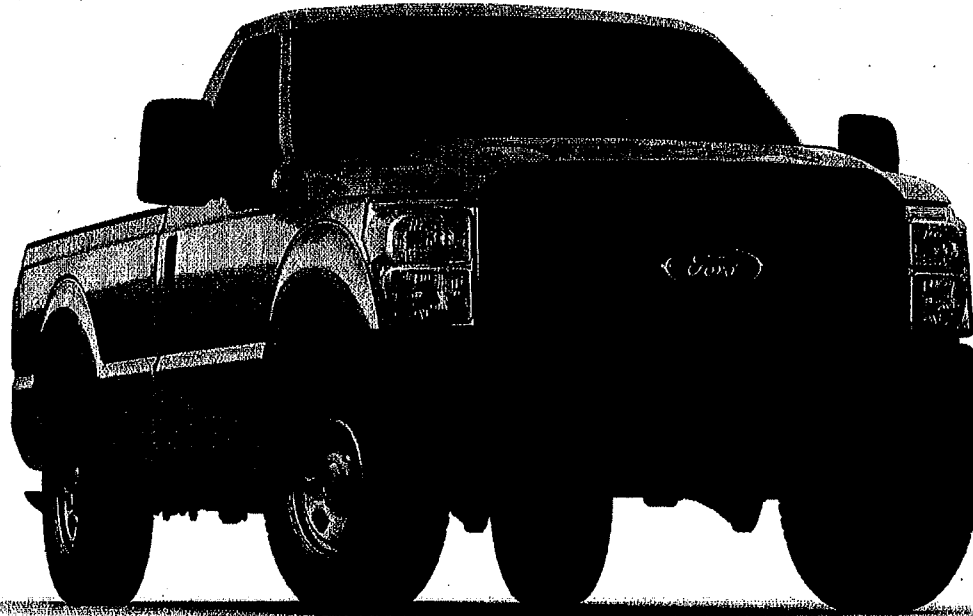


Go Further

Have vehicle questions? Call (800) 923-9484

2016 Super Duty Pickup

F-250 XL



Payment

Base MSRP ^{S1}	\$32,385
Total of Options ^{S4}	\$270
Destination Charges ^{S17}	\$1,195
Total MSRP ^{S16}	\$33,850
Available Incentives ^{S3}	-\$750

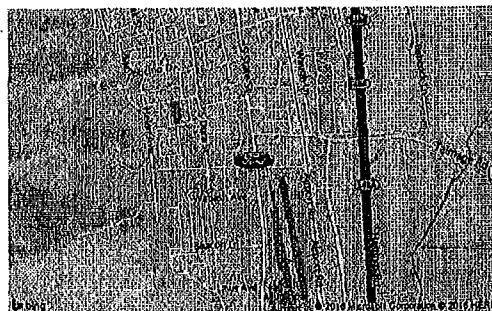
Ford Credit Retail Bonus Customer Cash

Program #12916: \$750.00 Ford Credit Bonus cash requires Ford Credit financing. Not all buyers will qualify. Take new retail delivery from dealer stock by 07/05/2016. Not all F-Super Duty models may qualify. See dealer for residency restrictions, qualifications and complete details.

Amount: \$750, Offer Valid: Apr 5, 2016-Jul 5, 2016

Net Price^{S5} **\$33,100**

\$433 Per Month^{S6} Based on \$3,385 down payment, 84 month term and 5.9% APR, \$0 trade-in-value



Model

2016 Ford F-250 XL Regular Cab, 4x2, SRW, 8' Box, 6.2L 2-Valve SOHC EFI NA V8 (Flex-Fuel) Engine, TorqShift® 6-Speed Auto, O/D w/Tow/Haul Mode, 3.73 Non-Limited Slip Axle Ratio **\$32,385**

Paint^{S4}

Oxford White **\$0**

Exterior^{S4}

Center High Mount Stop Lamp **\$0**
 Manual Trailer Tow Mirrors with Manual Glass **\$0**
 17" Argent-Painted Steel Wheels (SRW) **\$0**
 LT245/75Rx17E BSW A/S (5) Tires **\$0**

Interior^{S4}

Steel **\$0**
 Heavy Duty Vinyl **\$0**
 Trailer Brake Controller **\$270**
 AM/FM Stereo with Digital Clock and Two Speakers **\$0**
 Heavy Duty Vinyl Front 40/20/40 Split Bench Seat **\$0**

Standard Features

Interior Features

- Seats - Front, Vinyl 40/20/40 Split Bench
- Seats - Front, Manual Lumbar Support,

Exterior Features

- Bumpers, front and rear - black painted steel with front grained molded-in-color top cover

Driver Side

- Seats - Rear, Vinyl 60/40 Fold-Up Bench Seat (SuperCab)
- Seats - Rear, 60/40 Flip-Up/Fold-Down Bench Seat (Crew Cab)
- Air Conditioning – Manual Temperature Control
- Audio - AM/FM Stereo, Digital Clock, Two Speakers
- Dash-top tray
- Dome Lamp – door-activated instrument panel switch operated with delay
- Door Trim – armrest/grab handle and reflector
- Floor Covering - black vinyl
- Grab handles – driver and front passenger and roof ride handles; front passenger (also over rear doors with Crew Cab)
- Headliner – color coordinated cloth
- Instrument Cluster - multifunction message center
- Instrument panel – color coordinated
- Instrumentation with tachometer and Message Center including odometer, trip odometer, distance-to-empty, average fuel economy, engine hour meter and warning messages
- Map lights – dual (front and rear with Crew Cab)
- Powerpoint - auxiliary, 2, Instrument panel mounted
- Rearview Mirror - 11.5" day/night
- Steering Wheel - Black vinyl
- Storage – secondary glove box (4x4 requires Electronic-Shift-On-the-Fly)
- Sun visors - color coordinated vinyl, single driver with pocket, single passenger with mirror insert
- Tilt/telescoping steering wheel
- Windshield wipers – interval control

and black lower air dam

- Door Handles - black
- Grille - black bar-style
- Headlamps - Dual beam halogen
- Lights – Pickup box and cargo area
- Mirrors - Manual Telescoping Trailer Tow with Manual Glass
- Pickup box – partitionable and stackable
- Tailgate - Tailgate Assist™ and quick-release
- Tie-down hooks – pickup box (four with 6 ¾' box; six with 8' box)
- Tow hooks – (2) front, black
- Moldings - tailgate and box rail, black
- Glass – solar tinted
- Window - rear, fixed
- Window - flip-open rear quarter (SuperCab)

Power and Handling

- Engine - 6.2L SOHC 2-valve Flex Fuel V8 engine (F-250/350)
- Transmission - TorqShift® Heavy-Duty 6-speed SelectShift™ Automatic
- Alternator - Single, Heavy-Duty, 157-amp
- Axle - Twin I-beam front axle with coil spring suspension – 4x2 (F-250, F-350)
- Axle - Mono-beam front axle with coil spring suspension – 4x4 (F-250, F-350)
- Brakes – 4-wheel power disc brakes with Anti-lock Brake System (ABS); vacuum-boost (SRW)
- AdvanceTrac® with Roll Stability Control® (RSC) – SRW
- Trailer Sway Control
- 26 Gallon Fuel Tank (Diesel Engine) – 137" Wheelbase
- 26 Gallon Fuel Tank (Diesel Engine) – 142" & 156" Wheelbase
- 35 Gallon Fuel Tank (Gas Engine)
- Shock absorbers – heavy-duty gas
- Stabilizer bar – front
- Stationary Elevated Idle Control (SEIC)
- Steering – power
- Steering damper
- Tire Pressure Monitoring System (SRW only; excludes spare)
- Trailer Hitch Receiver – 12.5K Built Ford Tough® Trailer Hitch Receiver (SRW)
- Trailer Tow Package (F-250/F-350)
- Transfer Case - Manual 4-Wheel-Drive System with manual locking hubs (4x4 models only)
- Wheels - 17" Argent-Painted Steel (SRW)

- LT245/75Rx17E BSW A/S (5-SRW / 7-DRW) (XLT, Lariat, King Ranch® and Platinum require DRW)
- Tire - Spare, wheel, lock and frame-mounted carrier

Safety

- Airbags — front seat front with passenger side deactivation switch (Regular Cab and SuperCab only)
- Airbags — front seat side
- Airbags — Safety Canopy® System with roll-fold side-curtain airbags
- Belt-Minder®, chime and flashing warning light on instrument cluster if belts not buckled
- Child tethers (Regular Cab, front passenger and all rear seating positions)
- Seat Belts - color coordinated with height adjustment (front outboard seating positions only)
- SOS Post Crash Alert System
- SecurILock® Anti-Theft Ignition
- MyKey®

Your Configuration: 2016 Ford F-250 XL Regular Cab, 4x2, SRW, 8' Box, 6.2L 2-Valve SOHC EFI NA V8 (Flex-Fuel) Engine, TorqShift® 6-Speed Auto, O/D w/Tow/Haul Mode, 3.73

Non-Limited Slip Axle Ratio

Pricing shown for Zip code 95482 as of April 19, 2016 ^{S2}

Note: Information is provided on an "as is" basis and could include technical, typographical or other errors. Ford makes no warranties, representations, or guarantees of any kind, express or implied, including but not limited to, accuracy, currency, or completeness, the operation of the Site, the information, materials, content, availability, and products. Ford reserves the right to change product specifications, pricing and equipment at any time without incurring obligations. Your Ford dealer is the best source of the most up-to-date information on Ford vehicles.

Disclosures through S17 apply to Search Dealer Inventory, Request A Quote, Get An Internet Price, Get A Quote, Let Us Find It For You, Build & Price and Incentives & Offers.

S1 Manufacturer's Suggested Retail Price (also referred to as "MSRP", "Base MSRP", "Base Price" or the "Starting At" price), excludes destination/delivery charge, taxes, title, license, and registration and/or electronic filing fees, dealer fees, and total of options. For authenticated AXZ Plan customers, the price displayed may represent Plan pricing. Not all AXZ Plan customers will qualify for the Plan pricing shown and not all offers or incentives are available to AXZ Plan customers.

S2 Images shown are for information purposes only, and may not necessarily represent the configurable options selected or available on the vehicle. We cannot be responsible for typographical or other errors, including data transmission, display, or software errors, that may appear on the site.

S3 Offers shown may not be available to all customers. Incentives lists are examples of offers available at the time of posting and are subject to change and expiration. Not all incentives can be redeemed together. To take advantage of rebates, incentives and/or financing offers you must take new retail delivery from dealer stock by the expiration date noted. Not all buyers will qualify for Ford Credit financing or other offers. Restrictions apply. See your local dealer for complete details.

S4 The Option Package price and monthly payment displayed is for illustration purposes, only. Prices and monthly payments may vary based on features included in package, financing terms and availability. Some Options are not available separately. Not all Options or Option Packages are available on all vehicles. See your local dealer for details.

S5 Net Price is the Total Manufacturer's Suggested Retail Price ("Total MSRP") minus any available offers and/or incentives. Excludes taxes, title, and registration fees. For authenticated AXZ Plan customers, the price displayed may represent Plan pricing. Not all AXZ Plan customers will qualify for the Plan pricing shown and not all offers or incentives are available to AXZ Plan customers.

S6 The payment estimator will calculate a monthly payment based on the MSRP of the vehicle you have configured, including the dealer-installed accessories. For authenticated AXZ Plan customers, the price displayed may represent Plan pricing. Not all AXZ Plan customers will qualify for the Plan pricing shown. Actual monthly payment is based on a variety of factors, including differing