

Family & Children's Services

May 2025 Monthly Report

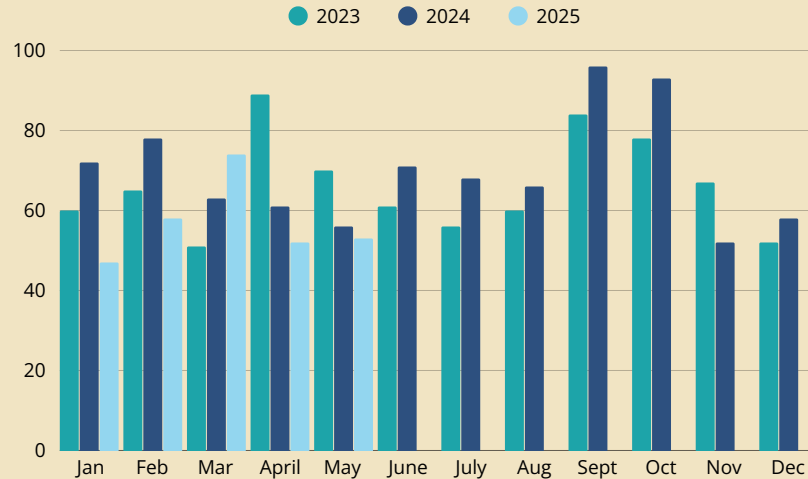
Suspected Child Abuse

Family & Children's Services operates an Emergency Response Hotline 24 hours a day, 7 days a week, 365 days a year to receive reports of alleged child abuse and neglect.

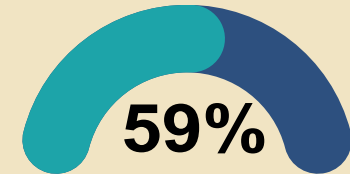
Please call 1-866-236-0368 to report suspected child abuse.

When a child abuse or neglect report is made, a team of professionals review the report and determine the level of response required to investigate the allegations and protect the child, if necessary, utilizing the statewide Structured Decision Making (SDM) system.

Suspected Child Abuse Reports Assigned for Investigation



May 2025 Response Rate for Immediate and 10-day State Requirement



If a referral meets standards that are determined by the State of California, a Social Worker is assigned to investigate the report immediately or within 10 calendar days. Some referrals require joint investigations with law enforcement and/or tribal representatives. **This response rate has decreased 18% from May 2024.** Staffing fluctuations and resulting documentation delays are affecting this data point. The State standard is meeting or exceeding a 90% response rate.

May 2025 Children and Youth in Care

<10 Short-Term Residential Therapeutic Program

153 Home-Based Care which includes Tribally approved homes

Home-based care is the preferred option for children and youth. The department works with each case to identify natural supports placing children in the least restrictive environment and, preferably with a relative, family friend, tribally approved home or other familiar connection while maintaining safety.

In some cases, residential treatment is necessary due to mental health and/or substance abuse treatment needs. In these situations, the department works with a treatment team to address these concerns and move the youth to a home-based care setting as soon as possible.

Child Welfare Re-Entry

Re-Entry tracks children and youth who have exited Child Welfare and re-entered within a 12-month period.

The Federal standard is having less than 8.3% re-entry.

2023 <10%

2022 11.4%

2021 16.9%

** Data comes from CCWIP and is only available for annual reporting. Less than 10% is masked to protect the privacy of individuals served.*

May 2025 County Approved Homes

127 County Approved Resource Family Homes

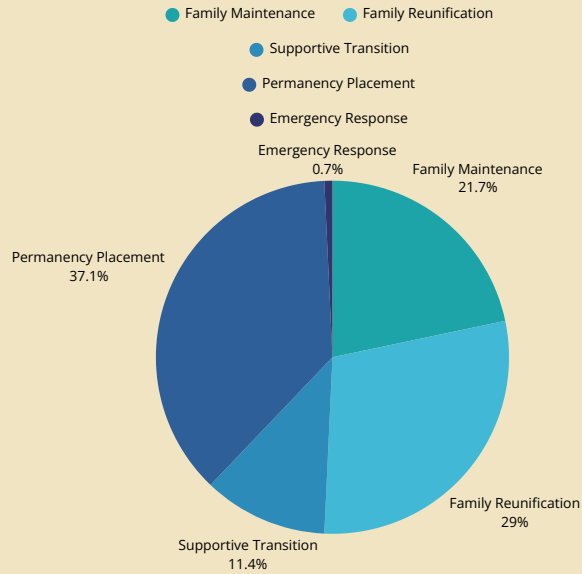
27 County Resource Family Homes in approval process

In **May 2024, FCS had 82 approved County RFA homes.** The Resource Family Approval Unit has done tremendous work to increase the number of homes available for children and youth in need of foster care placement. FCS also utilizes approved Resource Family Homes through Redwood Community Services, Tapestry Family Services and other Foster Family Agencies throughout the state for placement.

Family & Children's Services

May 2025 Monthly Report

May 2025 Children and Youth by Program



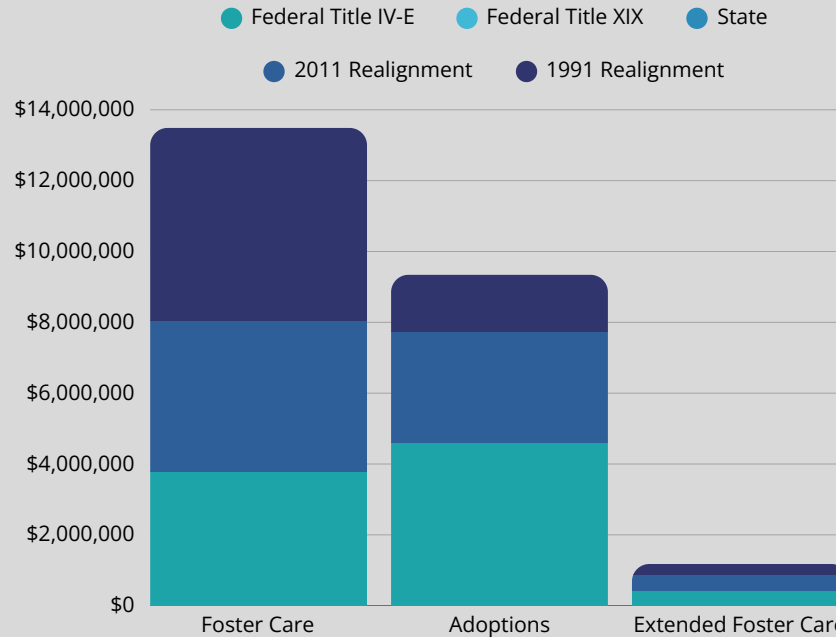
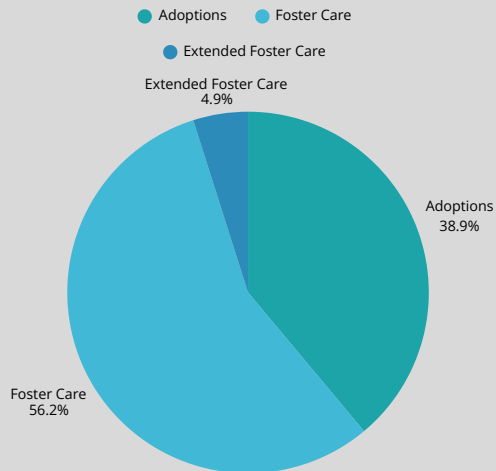
12 Youth Were Served Through The Wraparound Program in May 2025

Due to the complexity of services provided, State guidelines allow for a maximum of 8-12 cases per Wraparound team. Mendocino County Family & Children's Services has 1 Wraparound team providing a minimum of 6 months support for each aftercare step down case. This is a crucial program to increase successful reunification or permanency placement for children and youth returning from a higher level of care.



Fiscal Year 23/24 Family & Children's Services Funding Sources

Program Funding Breakdown



In addition to program costs, FCS administration is covered through Federal, State, 2011 Realignment and 1991 Realignment funding.

Realignment Funding: Due to past recessions, the State stopped providing State General Funds to Counties and instead gave Counties a portion of increased State-wide sales taxes to be used in place of the State's General Funds with the stipulation that counties spend the new source of revenue in the exact same manner in order for the State to make its Federally required match.

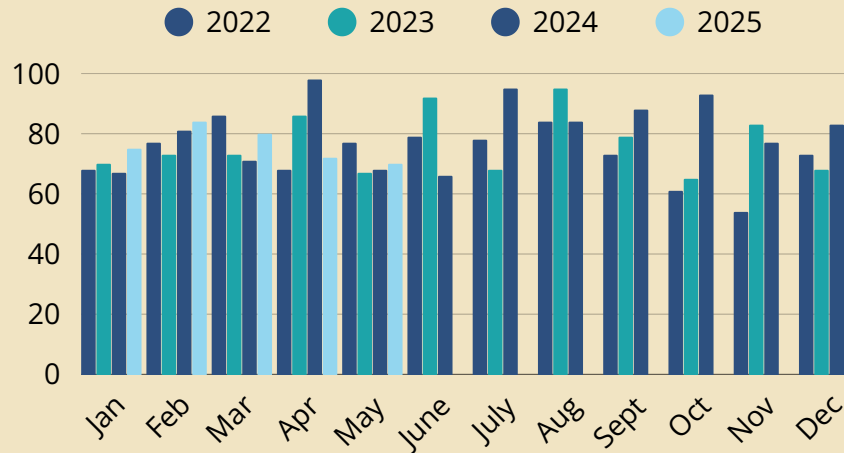
Adult & Aging Services

May 2025 Monthly Report

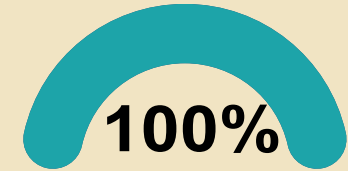
Suspected Elder and Dependent Adult Abuse

APS is a 24-hour service mandated by the State of California and designed to investigate all reported at-risk situations involving elder adults (60 years of age and older) and dependent adults (ages 18-59 who are disabled). APS is a voluntary program. Any victim of elder or dependent adult abuse may refuse or withdraw consent, at any time, to an investigation or provision of services.

Suspected Elder and Dependent Adult Abuse Reports Received and Investigated



May 2025 10-day Response Time



If a referral meets standards that are determined by the State of California, a Social Worker is assigned to investigate the report and provide an in-person response either immediately or within 10 calendar days. Some referrals require joint investigations with law enforcement and/or tribal representatives. **April 2025, the response timeliness compliance rate was 95.65%.** Difficulty in client availability and documentation delays do affect this data point. The minimum expectation is meeting or exceeding a 90% response compliance rate.

Please call 1-877-327-1799 to report suspected elder or dependent adult abuse.

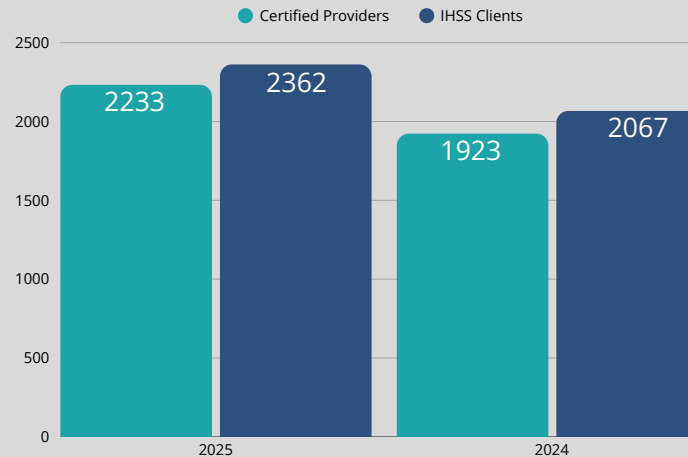
May 2025 Housing Support

0 APS- Home Safe Program is specifically designed to support APS clients to remain safely in their home or avoid homelessness. **Since this program launched in 2018, 81 APS clients were served in this program.**

10 The Housing and Disability Advocacy Program (HDAP) assists people experiencing or at risk of homelessness who are likely eligible for disability benefits by providing advocacy for disability benefits as well as housing supports. **Since this program launched in 2016, 92 clients were served in this program.**

Please call (707) 463-7900 to learn more about IHSS eligibility or to become an IHSS provider.

May 24/25 In-Home Supportive Services



While IHSS providers may care for more than one client, the need for providers continues to exceed providers available.

The In-Home Supportive Services (IHSS) program provides in-home assistance to eligible aged, blind, and disabled individuals as an alternative to out-of-home care and enables recipients to remain safely in their own homes.

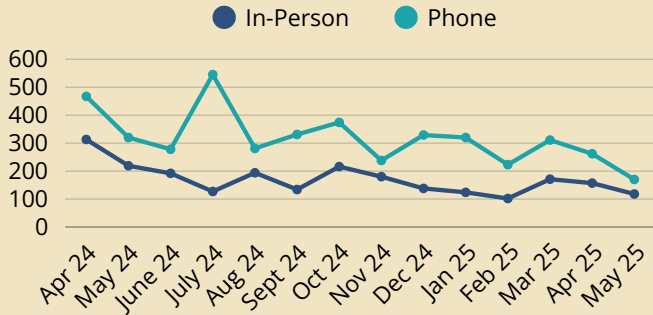
Eligibility criteria for all IHSS recipients is as follows:

- Must be a California resident.
- Must be Medi-Cal eligible
- Must live at home (acute care hospital, long-term care facilities, and licensed community care facilities are not considered "own home").
- Must submit a completed Health Care Certification form.

Adult & Aging Services

May 2025 Monthly Report

Veterans Client Contacts



Dollars Awarded To Veterans Through Disability and Compensation Claims With Support of Veterans Services

FY 23/24 \$3,200,000

FY 22/23 \$3,203,274

FY 21/22 \$21,225,829

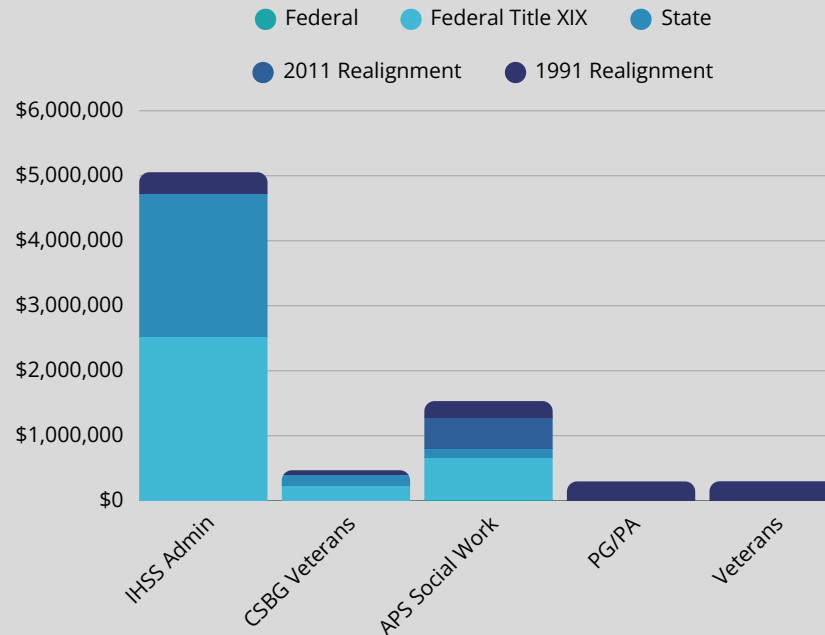
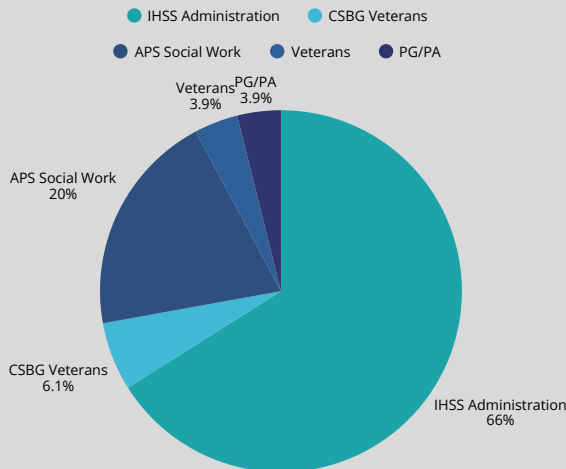
Note: The PACT ACT approved by President Biden in August 2022, expanded VA Healthcare access and benefits to those veterans exposed to burn pits, Agent Orange, and other toxic substances who did not previously qualify for disability compensation thus showing a sharp increase in FY 21/22.

Veterans Services staff can assist you in securing the maximum benefits such as:

- Compensation for service related disabilities
- Pension for veterans with non-service connected disabilities
- Education benefits
- Medical treatment at VA Medical Centers
- Home loan benefits
- And more!

Fiscal Year 23/24 Adult & Aging Services Funding Sources

Program Funding Breakdown



CSBG - Community Services Block Grant Includes time spent performing activities to help individuals, who are Medi-Cal eligible or potentially eligible, gain access to services covered under the State Medi-Cal plan in order to attain and/or maintain a favorable physical condition.

PG/PA - Public Guardian/ Public Administration

APSS - Adult Protective Services

Employment & Family Assistance Services

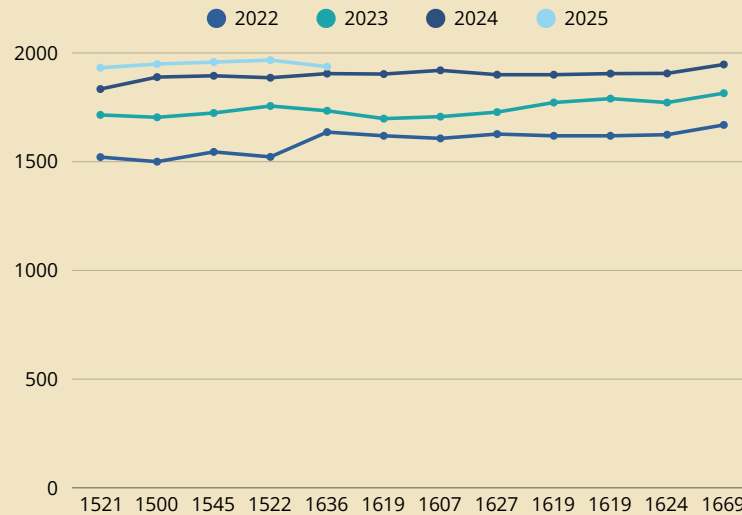
May 2025 Monthly Report

CalWORKS

CalWORKS and Temporary Assistance to Needy Families (TANF) provide a temporary cash grant to eligible low-income families designed to promote self-sufficiency. These cash grants are based upon income and resource levels with medical costs covered through Medi-Cal.

In May 2025, the CalWORKS program brought \$730,000 into our local economy supporting our most vulnerable community members in accessing temporary financial assistance.

CalWORKS Customers Served



May 2025 CalWORKS Housing Programs

6 Families served through Temporary Homeless Assistance. This program may pay for temporary shelter for up to 16 nights for homeless families.

0 Families served through Permanent Homeless Assistance. This program can assist with securing permanent residence with deposit assistance or pay up to 2 months of arrearages to prevent the household from becoming homeless due to a pending eviction.

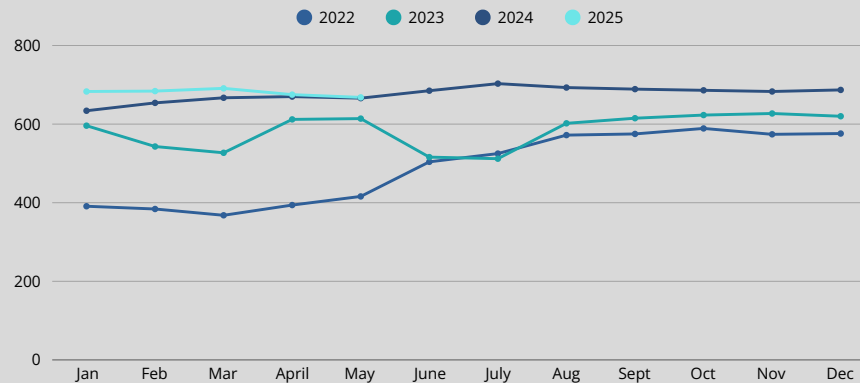
11 The Housing Support Program is transitioning to a new team with Social Services. Data will resume once the transition is complete.

CalWORKS Job Services

CalWORKS Job Services provides employment and training services to eligible CalWORKS recipients. Participants receive guidance and support in career assessment, educational development, and life skills training.

In May 2025, CalWORKS Job Services had 668 participants which is a increase from 666 in May 2024.

CalWORKS Job Services Welfare to Work Participants



*The State program, CalSAWS, experienced a defect that deregistered some WTW program data for February, March, June and July 2023 lowering the number of participants. CalSAWS is aware of this glitch and has resolved the issue.

May 2025 CalWORKS Job Services Supports

78 Children served with childcare assistance

38 Participants receiving transportation assistance (travel reimbursement, bus passes)

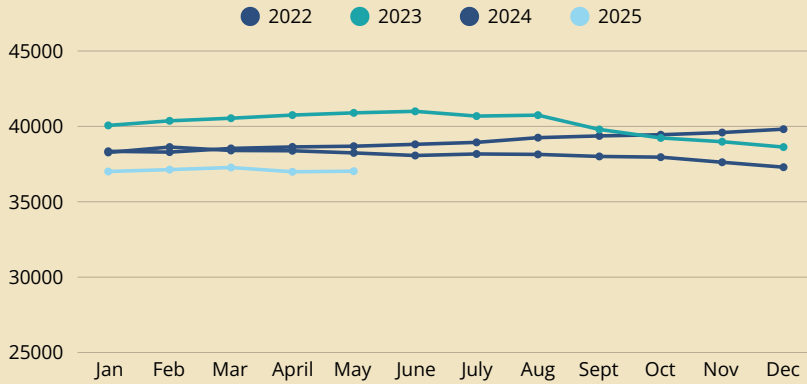
42 Participants receiving ancillary services (work/interview clothing, shoes, educational payments, school supplies)

The Student Training and Education Program (STEP) is a CalWORKS program that helps participants get education and training to find employment. STEP includes supportive services and counts study time toward welfare-to-work requirements.

Employment & Family Assistance Services

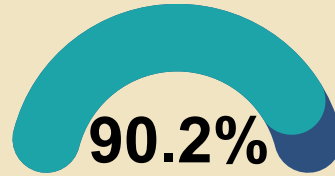
May 2025 Monthly Report

Medi-Cal Individuals Served Through EFAS



With Medi-Cal redeterminations beginning following the end of the Public Health Emergency, the number of Medi-Cal individuals served through this department has decreased. Please note that not all Mendocino County residents covered by Medi-Cal are administered through this department.

May 2025 Medi-Cal Timely Redeterminations

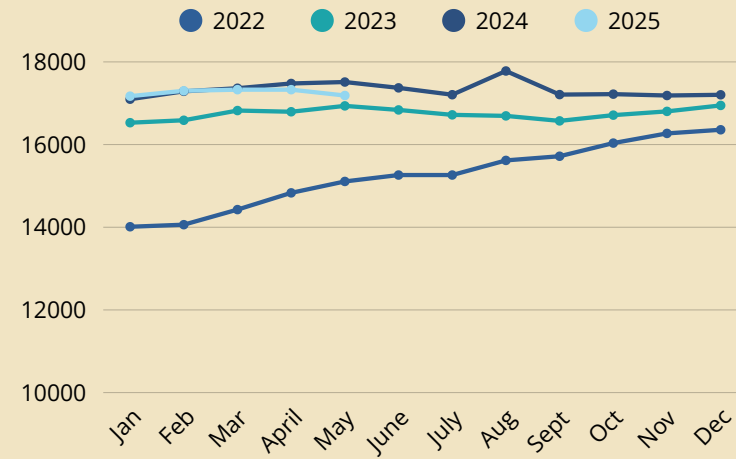


The State target for Medi-Cal timely redeterminations is 90%.

April 2025, the response timeliness compliance rate was 88.17%.

Although the County has made progress towards reaching the target, the volume of work exceeds the capabilities of current staffing levels.

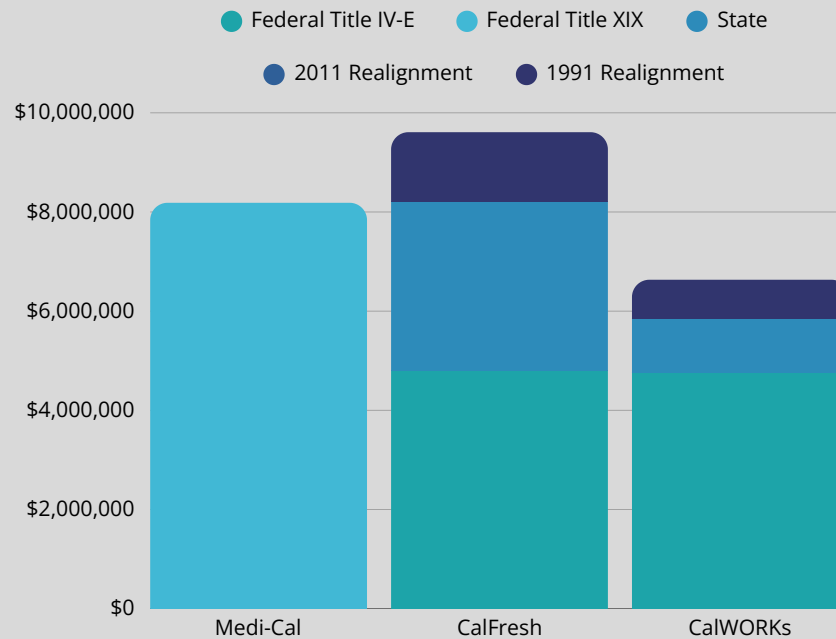
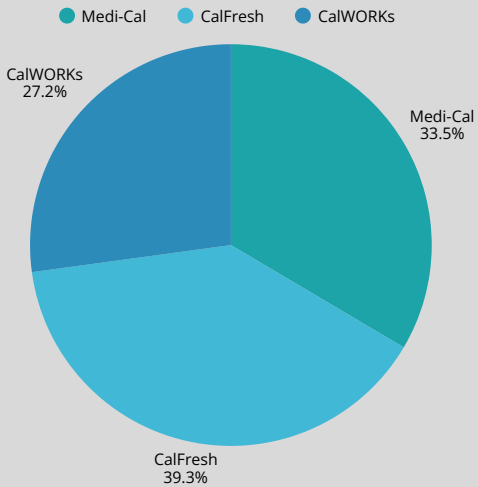
CalFresh Individuals Served



In May 2025, the CalFresh program brought \$3.22 million into the local economy supporting individuals and families meet their basic food needs.

Fiscal Year 23/24 Employment & Family Assistance Services Funding Sources

Program Funding Breakdown



In addition to program costs, EFAS administration is covered through Federal, State, 2011 Realignment and 1991 Realignment funding.

Realignment Funding: Due to past recessions, the State stopped providing State General Funds to Counties and instead gave Counties a portion of increased State-wide sales taxes to be used in place of the State's General Funds with the stipulation that counties spend the new source of revenue in the exact same manner in order for the State to make its Federally required match.