



County of Mendocino

DEPARTMENT OF PLANNING AND BUILDING SERVICES

860 NORTH BUSH STREET · UKIAH · CALIFORNIA · 95482
120 WEST FIR STREET · FT. BRAGG · CALIFORNIA · 95437

JULIA KROG, DIRECTOR

TELEPHONE: 707-234-6650

FAX: 707-463-5709

FB PHONE: 707-964-5379

FB FAX: 707-961-2427

pbs@mendocinocounty.org

www.mendocinocounty.org/pbs

MEMORANDUM

DATE: MAY 5, 2022

TO: PLANNING COMMISSION

FROM: MARK CLISER, PLANNER II

SUBJECT: U_2021-0017 STAFF REPORT – CORRECTION & ADDITIONAL ATTACHMENT

Staff would like to note an error in the Staff Report, Initial Study, and Resolution for Use Permit U_2021-0017. The Staff Report, Resolution, and Initial Study inaccurately state the total height of the tower will be 67 feet when the correct total height of the tower will be 72 feet. Where the 67 foot height is referenced the associated documents, Staff recommends the following language be included to clarify the total height of the tower: “with top of foliage at seventy-two feet (72) feet.”

Staff has reviewed the Staff Report, Initial Study and Resolution and finds the additional 5 foot increase, due to faux foliage, does not change the findings for the project, nor does it change the Staff’s determination that the project impacts can be mitigated and brought to a less than significant level per CEQA. As such, Staff continues to recommend adoption of the Mitigated Negative Declaration and granting of the Use Permit.

Additionally, Staff recommends that the following Condition of Approval be revised to read as follows:

- **Condition of Approval number 1:** The total height of tower including antennas and faux branches shall not exceed 67 feet in height above ground level, with top of foliage at seventy-two (72) feet. Within sixty (60) days of completion of the installation of the facility, the applicant shall confirm that the height is no greater than approved, and shall submit a written certification to the County of the actual height.

Lastly, after publication of the Staff Report for U_2021-0017, the Agent provided Staff with Coverage Maps. These maps are attached to this memorandum.

Attachments:

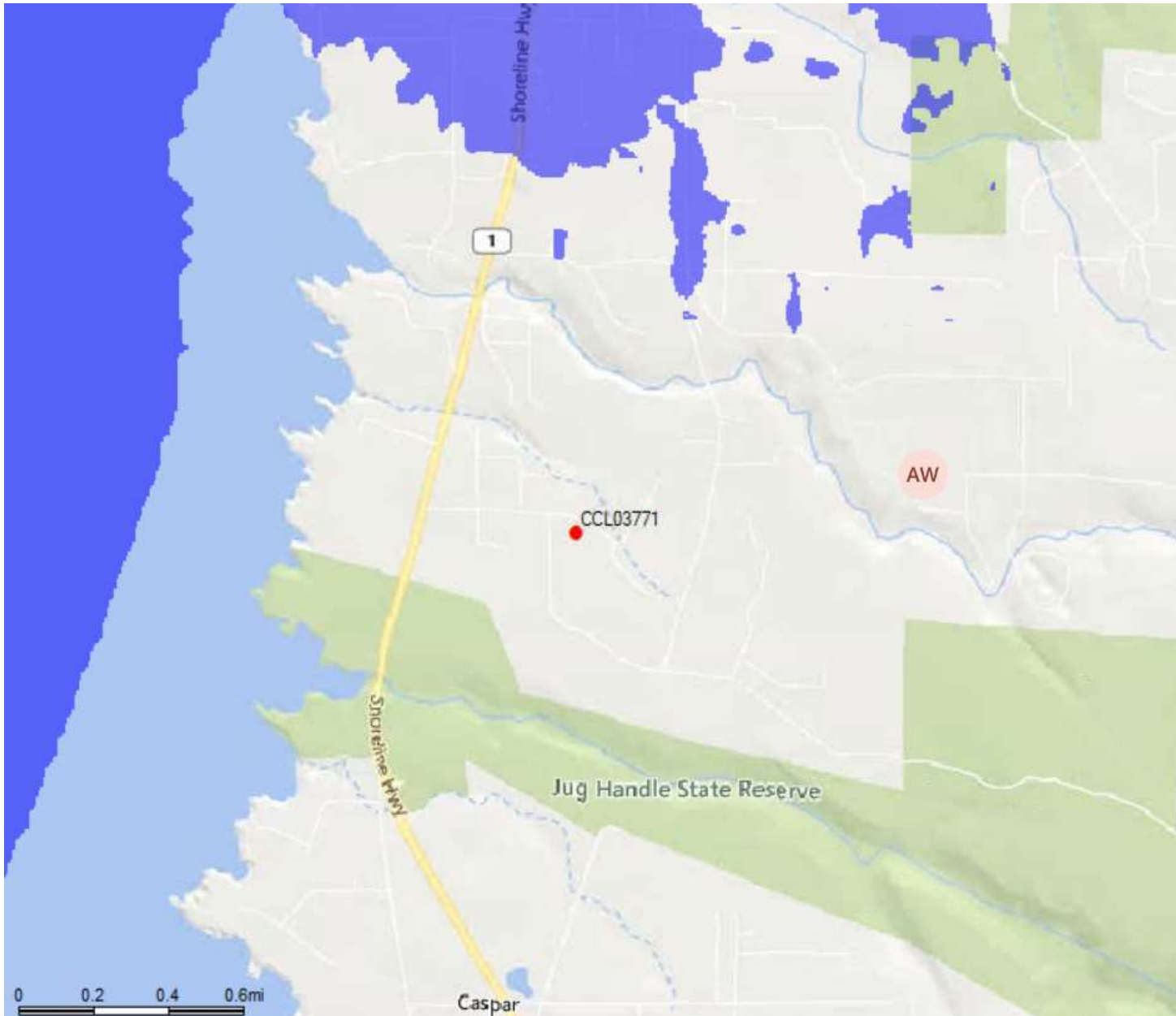
Coverage Maps

CCL03771 Zoning Propagation Map

May 3, 2022

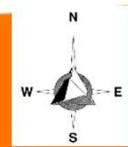


LTE 700 Existing Coverage

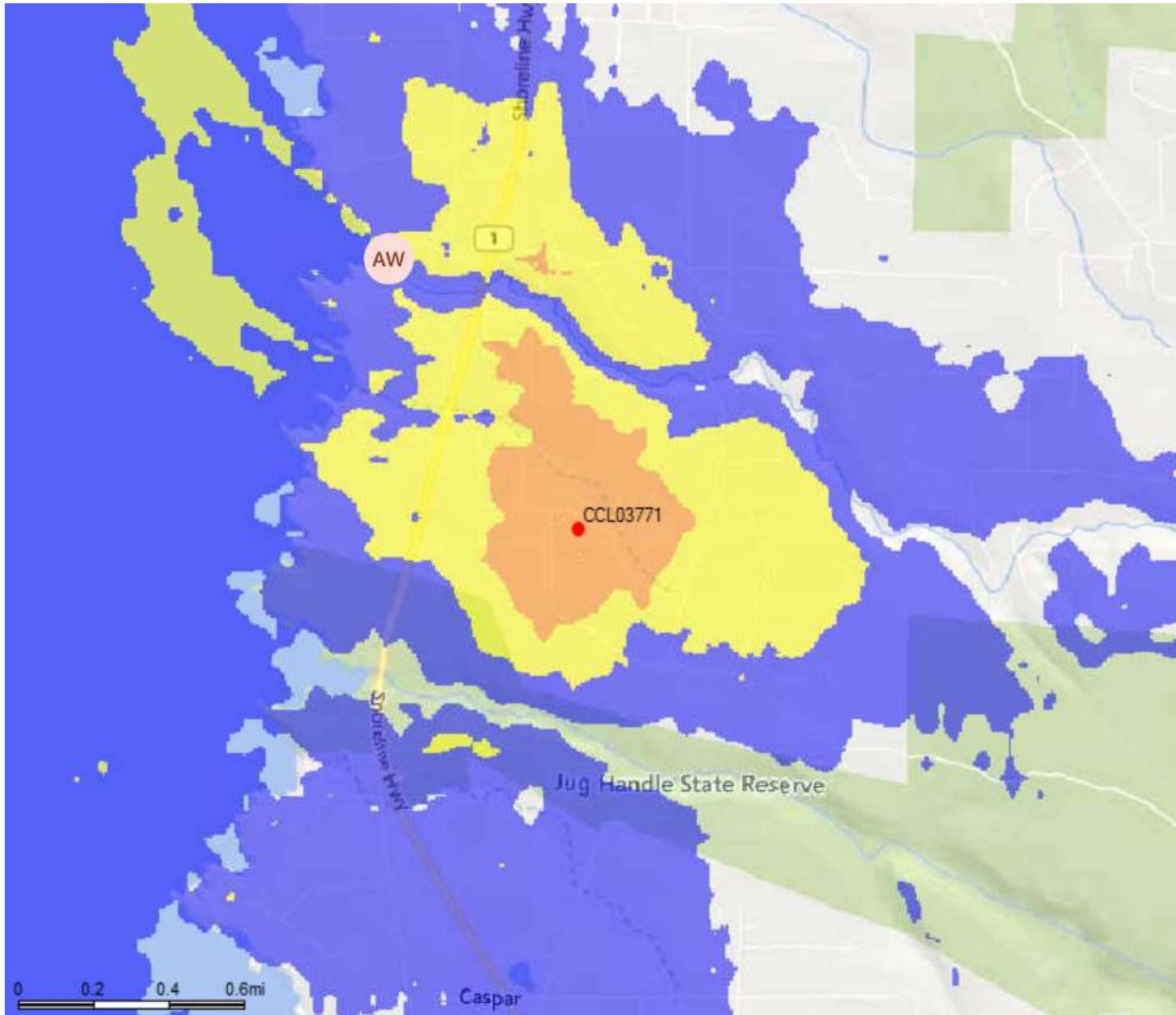


Legend






- Orange square: Reliable Service Indoors/Outdoors
- Yellow square: Reliable Coverage in Transit / Indoor Coverage Less Reliable
- Blue square: Reliable Coverage Outdoors Only / Indoor Coverage Less Reliable
- Grey circle: Existing site
- Red circle: Proposed site



LTE 700 Coverage with Proposed NSB



Legend

-  Reliable Service Indoors/Outdoors
-  Reliable Coverage in Transit
Indoor Coverage Less Reliable
-  Reliable Coverage Outdoors Only
Indoor Coverage Less Reliable
-  Existing site
-  Proposed site

